

# ARCHITECTURE & DESIGN PORTFOLIO

JULY 2018

Jonas Rivera, Architect

**ALL RIGHTS RESERVED.** No Parts of this book shall be reproduced or transmitted in any form or by any means, electronic or mechanical, including photocopying, recording or by any information storage and retrieval system, without the written approval of the Author, except where permitted by law.

# CONTENTS

## Explorations:

Oxymoron of Patterns 04

## Actual Projects:

Socialized Housing Model 1 : Bulacan 12

Socialized Housing Model 2 : Montalban 16

## Lectures and Workshops

Provectus : School of Advancing Architecture Students 20

## Office, Studio and Current Affiliation

The Boring Studio HQ 26

About the Architect 30

produced by The Boring Studio for  
Jonas Rivera, Partner-Architect



the **boring** studio

# THE OXYMORON OF PATTERNS : ARCHITECTURAL SCULPTURES



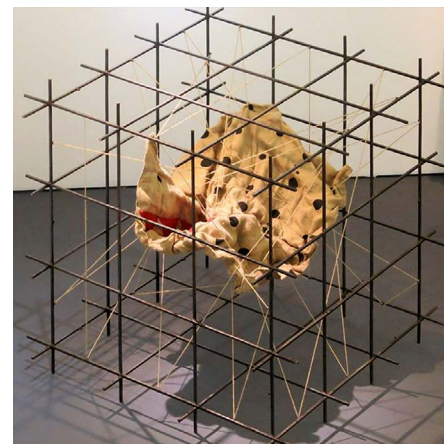
Cultural Center of the Philippines OCT - NOV 2015

Ampitheater Gallery, College of Saint Benilde - School of Design and Arts FEB - MAR 2016

CUBE 1 : DISTORTION – JUXTAPOSITION

**2015**

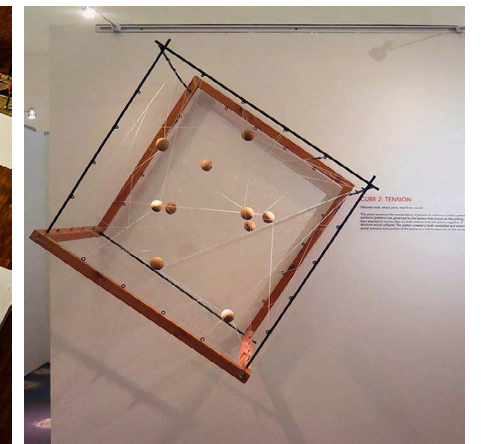
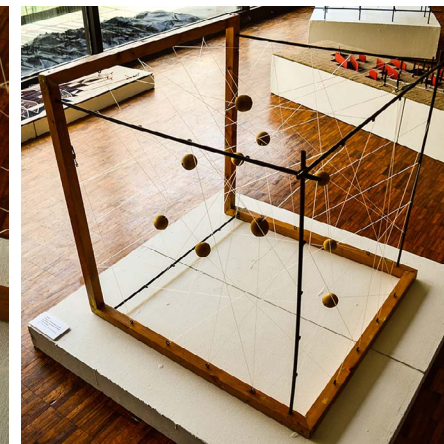
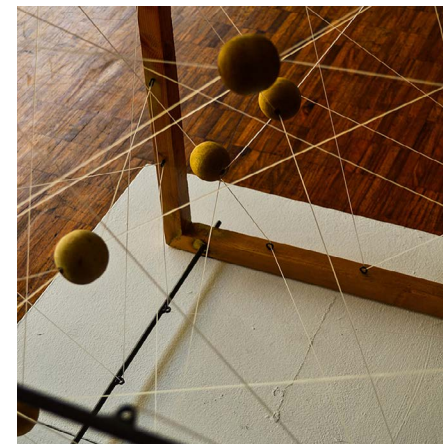
A fabric painted with a pattern is distorted arbitrarily, suspended by strings in different directions. In the outcome, although the painted pattern in itself is still discernible albeit the plane in which it exists being distorted already, it is perceived only to be as a component of a whole which is composed of different structure of patterns. This Piece is product of careful juxtaposition of different structures to compose a unified whole.

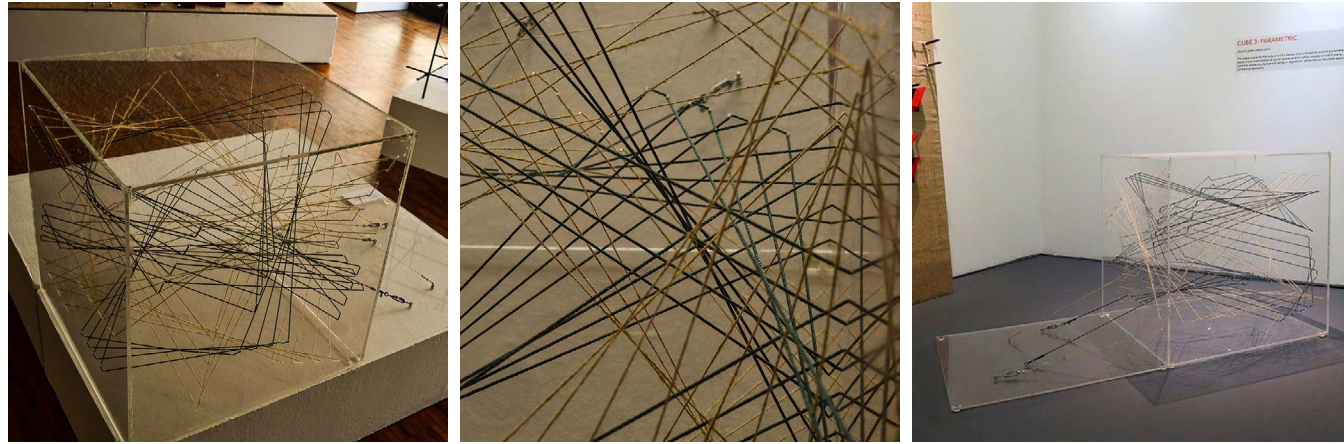


CUBE 2 : TENSION

**2015**

This piece examines the manipulation of physics to achieve a certain pattern. A continuous nylon string is inserted through balls of which positions are governed by tension resulting from pulling of the strings from multiple directions. The continuous string is then attached to turnbuckles on both ends to hold the pieces together. If a turnbuckle is unhooked, the whole structure would collapse. The Pattern created is both controlled and arbitrary as the balls are positioned to where they must be while the actual outcome and structure of the pieces as a whole depends on the tension generated and the resilience of the materials.

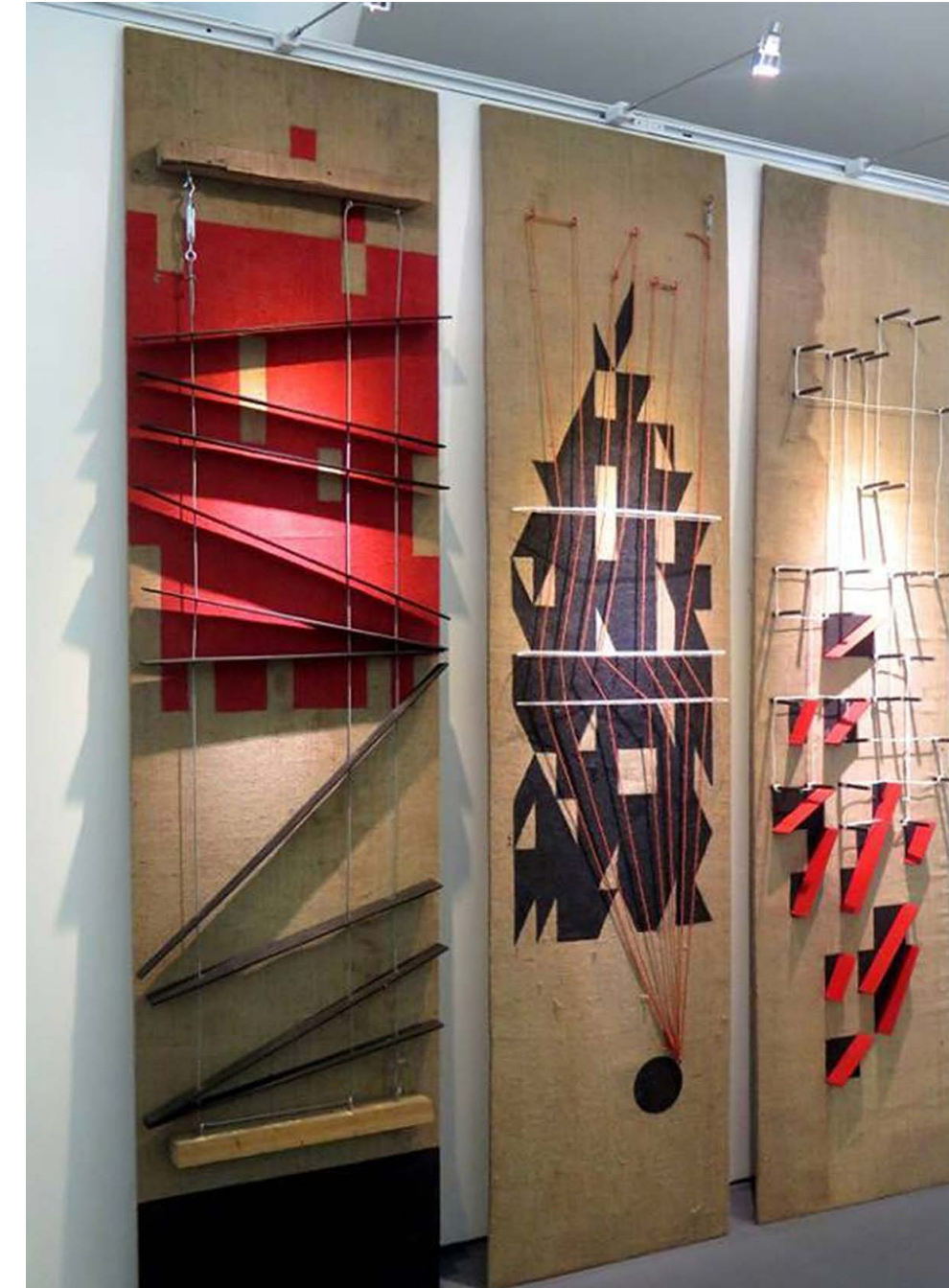




CUBE 2 : PARAMETRIC

**2015**

This piece explores the outcome of a design that is based on a strict parameter. A bounding element commands the mass and volume of the piece; holes were drilled at equal spaces between each other at certain angles on each plane; a continuous string pierces through the holes of the bounding element, achieving dynamism while in repetition; while turnbuckles assure tension and strength. Choice of materials were based on contrasting elements.



TRIPTYCH VOLUME 01

**2015**

The Triptych examines oxymoron of patterns in 2D-3D and objects-to-illustrations contrast. Each panel is 2' x 6'.

The Oxymoron of Patterns is the culminating project-activity of selected students of The Brown Bauhaus' METAARCH ADVANCED FOUNDATION COURSE IN DESIGN POETICS + MODERN AESTHETICS. This series of exhibitions also included 3 grade schoolers who were part of TBB's ARKLAB (Architecture Kindergarten Laboratory) course.

The architectural art installation is an attempt to frame the perplexity of patterns through a series of diagrams and meta-annotations. Pattern is defined here as a cybernetic system composed of moments or phenomena in nature and in secular world that occur simultaneously in the process of creation, destruction, and in-between. These patterns are the building blocks of which life were built upon. These relationships that were built upon the fabric of life are dialogues or rather diagrams that communicate the essence of living. These enigmatic phenomena of life are brought to light by its building blocks of Patterns. Patterns are symbiotic relationships of nature that exist in time and space that is everywhere at once. It is omnipresent; temporary and fleeting at the same time. The truth of a pattern lies in its oxymoron.

The installation works used natural and found objects such as peanut shells, staple wires, flexible tubes, nails, twigs, etc. and were abstracted through their metaphysical essence.

Cultural Center of the Philippines

jay uy  
ian dinglasan  
rowell raton  
mima carungcong  
rogelio uy  
abbey moya  
carlos giray  
kevin mapa  
coco base  
jonas rivera  
jeslyn san pedro  
tj antonio  
ponz madiano  
majo constante  
walther ocampo  
will ocampo  
seth ocampo  
gabs brioso  
robin ravago  
almi domingo  
carl fuentebella  
carlos tecson  
mai ebron  
xena ramos  
carla faner  
camille deters  
michael privado  
joemar alonzo  
marvin tapas  
justine ropero  
beth dela cruz

THE  
OXYM  
ORON  
— OF  
PATT  
ERNS

Artist talk  
-november 21 2015 -2:00pm  
-MKP HALL

Pattern of the Birth of Color  
Pattern of Structure  
Pattern of Chaos

**STUDIO SOLUM** + LABORATORY FOR VISIONARY AND SPECULATIVE ARCHITECTURE  
INTERDISCIPLINARY ARTS AND DESIGN

Exhibition Opening  
Oct. 21 2015 - 600pm  
4F Pasilyo Victorio Edades  
Runs till  
Oct. 21 - Nov 21 2015

Viewing hours: Tuesday to Sunday, 10am to 6pm. For more information, call the Visual Arts and Museum Division, Production and Exhibition Department at (632) 832-1125 loc. 1504/1505 and (632) 832-3702, mobile (63920) 4700690, email ccp.exhibits@gmail.com, or visit www.culturalcenter.gov.ph



## AI Project 01 : **A DESIGN FOR A SOCIALIZED HOUSING UNIT MODEL 1**

Location: SJDM, Bulacan

Area: 20 sq. m.

Status: Work in Progress

Brief: An Architectural Interior design of a socialized housing unit for a family of 4 members. The project required at least 2 bedrooms, a living room, kitchen, dining and toilet & bath.

Due to limited space of the entire unit, a mezzanine floor was added, allowed by a 5.00 m. high ceiling. The mezzanine floor was made into a bedroom for children but the area gets too hot due to a lower air space and the unit's orientation. As a solution, a screen was used as the main mezzanine partition instead of a drywall for better air circulation. Curtains were provided to compensate the need for privacy.

Objects and furniture were mostly fabricated by local skilled workers and craftsmen. With the proper combination of pragmatic design solutions and affordable materials and finishes, the overall aesthetic has transformed the unit into a truly dignified space to live in.

## A SOCIALIZED HOUSING UNIT MODEL 1

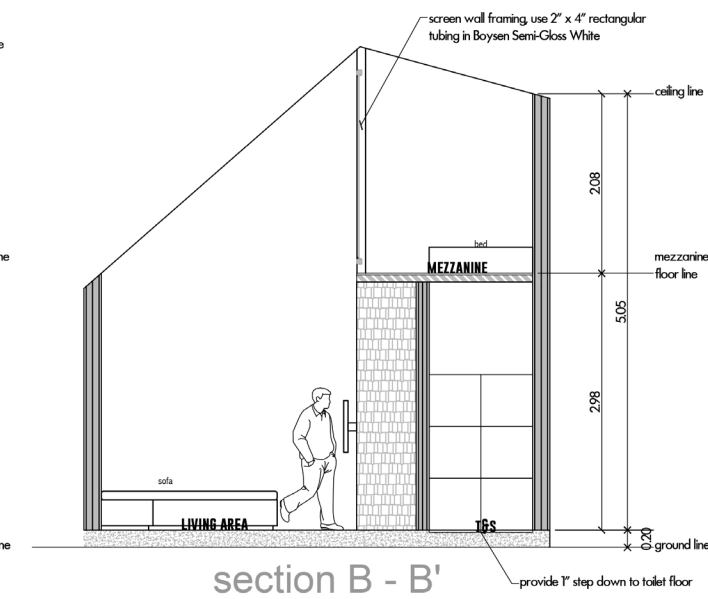
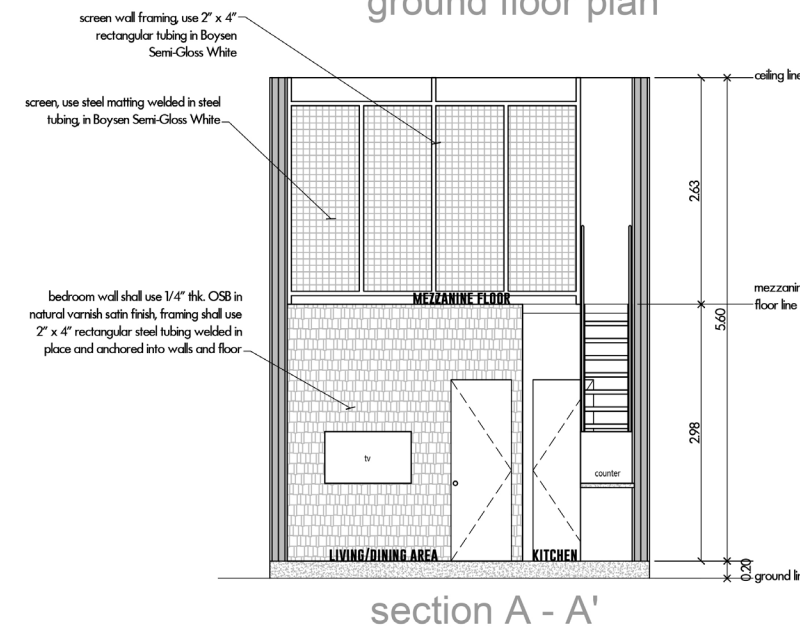
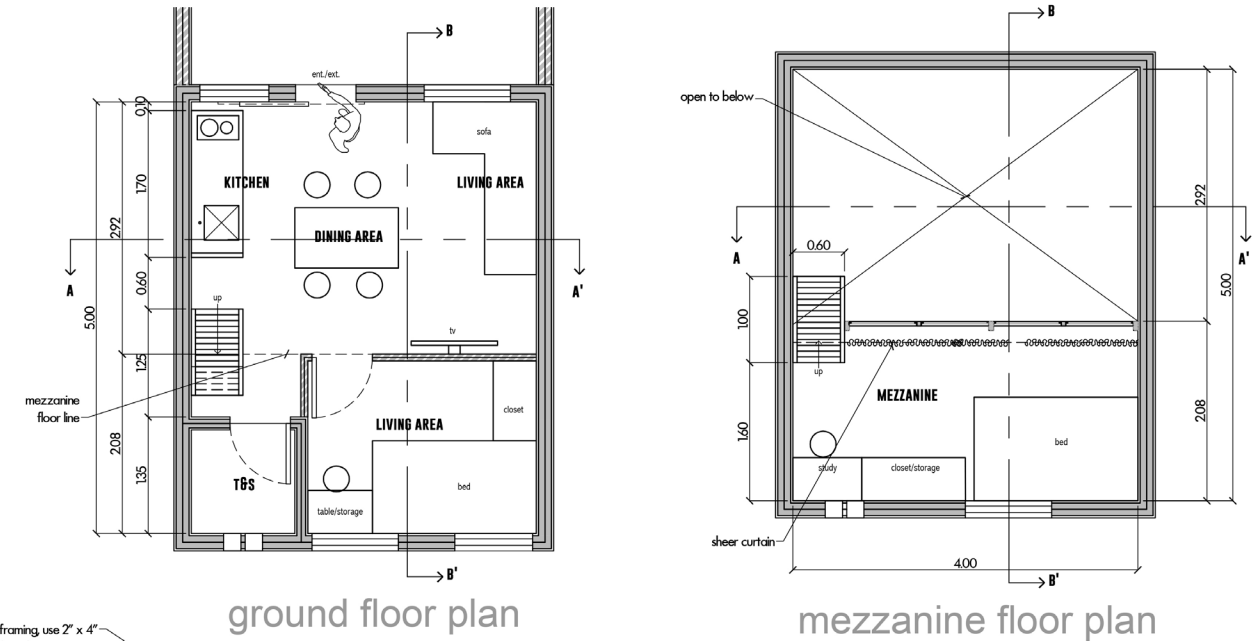




As expected, existing conditions of the housing unit were appalling - materials used, structural, quality of workmanship, etc - and with a limited budget, space, time and a lot of constraints (and problems), providing good design for such a project needed better and creative solutions. Luckily, clients were very open to experimentation and unconventional ideas.

In this case, architecture and design can only do so much and end-users must also be committed to alter their lifestyles and compromise for user-design to coexist. Above all, the challenge was how to provide a dignified dwelling for a young family that they will forever call home.

This model unit may be used as a study for future compact dwelling projects to come.



NOTE : detail drawings are not to scale



# A SOCIALIZED HOUSING UNIT MODEL 2

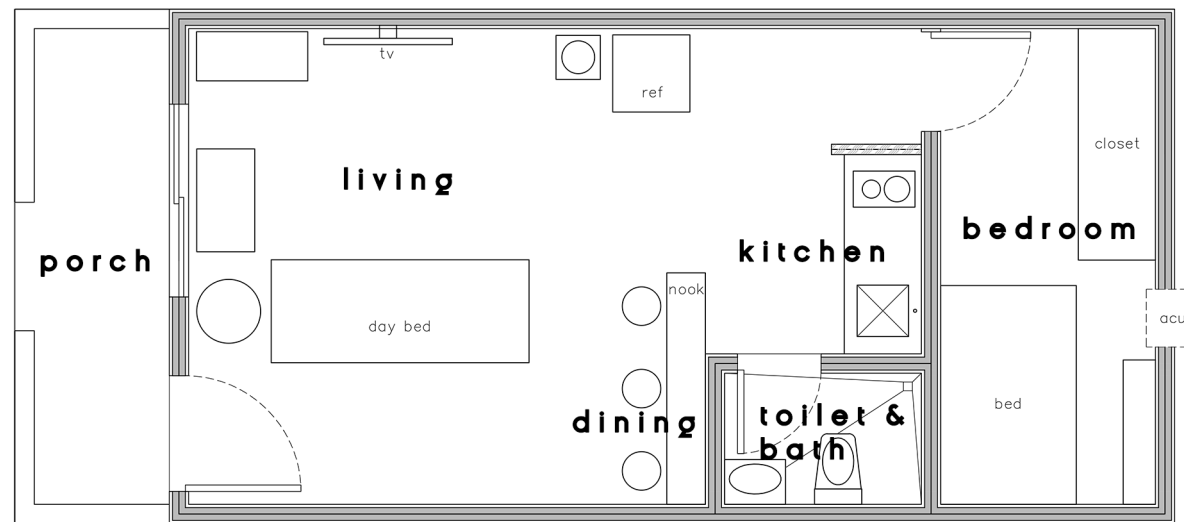
AI Project 03 : **A DESIGN FOR A SOCIALIZED HOUSING UNIT MODEL 2**

Location: Montalban, Rizal

Area: 36 sq. m.

Status: Work in Progress

The precedent housing project, A Design for a Socialized Housing Unit Model 1, opened an avenue for the common people to understand that architecture is not just for the privileged. Housing project entails potentials that are more playful and complex due to spatial and budget constraints. Shortly after publishing the previous model, the team got another commission from a family with a very similar requirement and situation - a dignified dwelling in a relocation site.



NOTE : detail drawings are not to scale



The clients, a young family acquired a pre-owned housing unit. The previous owner of the house used the space of the rear lawn(backyard) to its full setback and constructed a bedroom thus, blocking the unit's natural air ventilation. The solution was to dismantle the existing low dropped ceiling to create more air space, and installed gypsum boards aligned parallel to the existing roof slope.

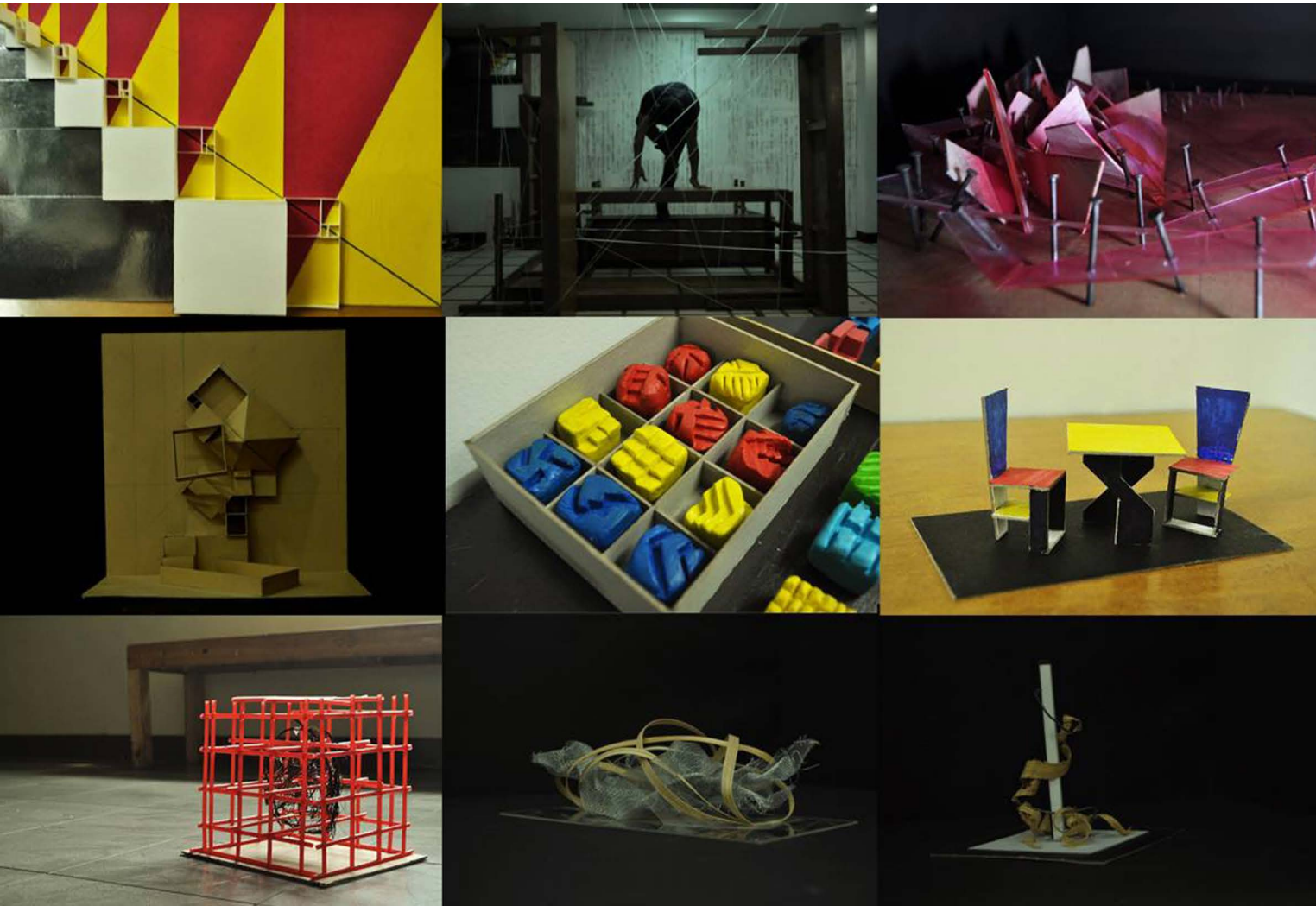
Epoxy paint in a peculiar color was applied on the floor instead of tiles. This proved more economical and ultimately transformed the entire interior into something really different from what the clients were used to, in a positive and uplifting way.

Most of the furniture are bespoke to fit perfectly within the limited space while also providing for the requirements of the client. A daybed was chosen instead of a sofa to accommodate guests who needed to spend a night of rest.

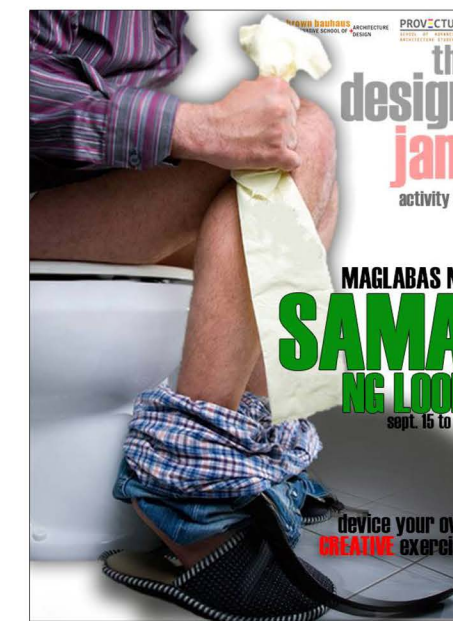
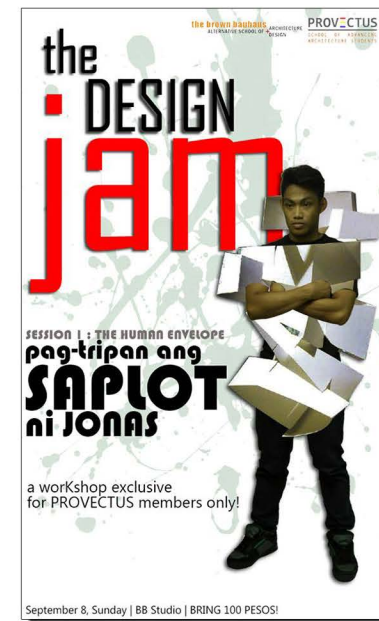
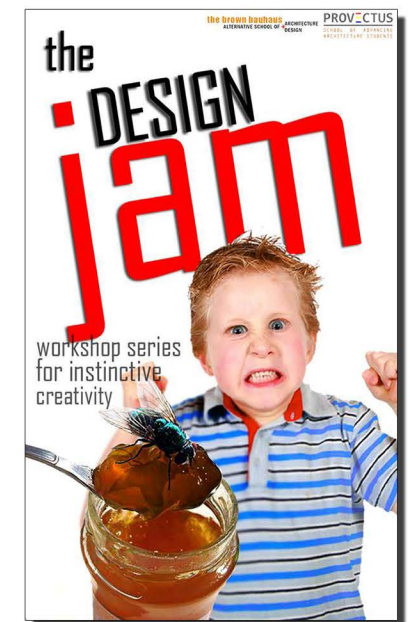
And same as with Model 1, it has gained recognition from neighbors further introducing them to the power of design - the same people who previously thought of aesthetics as a luxury only accessible to the privileged.



# PROVECTUS : SCHOOL OF ADVANCING ARCHITECTURE STUDENTS



Photos from The Brown Bauhaus' METAARCH ADVANCED FOUNDATION COURSE IN DESIGN POETICS + MODERN AESTHETICS



Promotional posters from some of Provectus' workshops, lectures and creative endeavors.



## TRANSFORM THAT SHEET! : THE PAPER ARCHITECTURE EXPERIMENT

Transform that SHEET! : The Paper architecture Experiment is an advance course of the Visual Arch Laboratory under the Brown Bauhaus, organized and facilitated by Provectus. It aims to enhance the design students' ability in design exploration and generating morphological ideas through folding, creasing, scoring, fixing, cutting and basically anything you may think of using a 20" x 30" sheet of chip board.

Folding is an architectonic language that promises unlimited possibilities and unrestricted interpretation. Despite its great potential, folding remains to be an uncharted process to most students and professionals in the Philippine Architecture scene. Folding offers an avenue for authentic designs for the act itself liberates the thought-process from preconceived ideas and visual images which are rampant on magazines and the internet.

# PROV<sup>E</sup>CTUS

---

## SCHOOL OF ADVANCING ARCHITECTURE STUDENTS

The Provectus : School of Advancing Architecture Students is the student arm of The Brown Bauhaus Alternative School of Architecture and Design. It is a group of select Architecture students from various schools and organizations, dedicated to learning the craft outside of the comforts of the school campus. The group, continuously engages in design and creative workshops and lectures and after which shares new learnings and explorations to other willing students by conducting their own workshops, talks and dialogues with the guidance of The Brown Bauhaus.

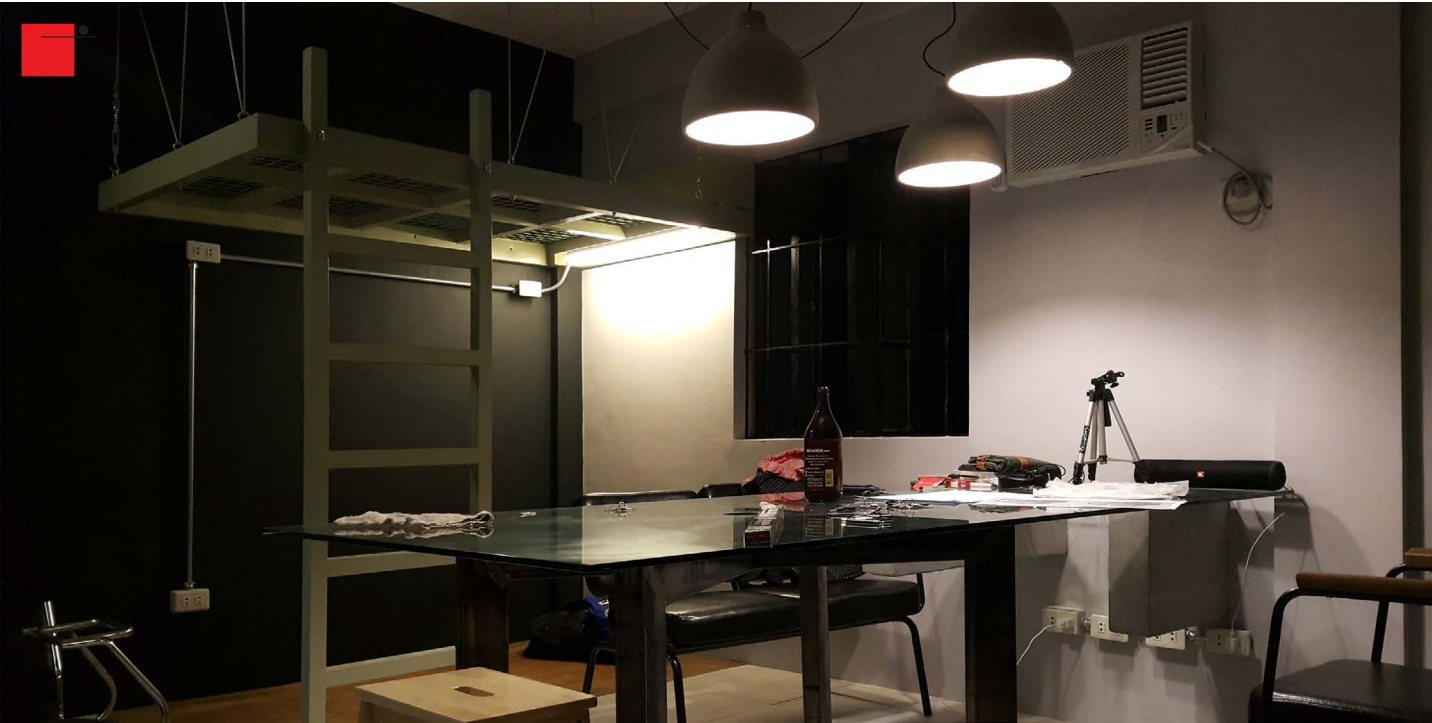
From 2010 Until it hiatus in 2014, the group has been a venue for architecture students who believe that real architecture, design education and craft lie beyond the constraints of the current institutionalized architecture pedagogy.

Provectus does not only organize, facilitate and participate but also gets the chance as assistant lecturers and teachers as they train not only to teach but also to hone personal skills and further develop their own philosophy.



Photo taken at CCP during a discussion as culminating activity of the BELIEVE tour conducted by The Brown Bauhaus and organized by Provectus. BELIEVE is a walk tour that studies precedents of architecture in Manila considered as "Filipino Architecture" to be used not as nostalgic conversation piece as in a history lecture but as specimens for architectural theory and criticism. Selected precedents were visited and re-investigated using the tools of a designer and not as historians celebrating the history of each building.

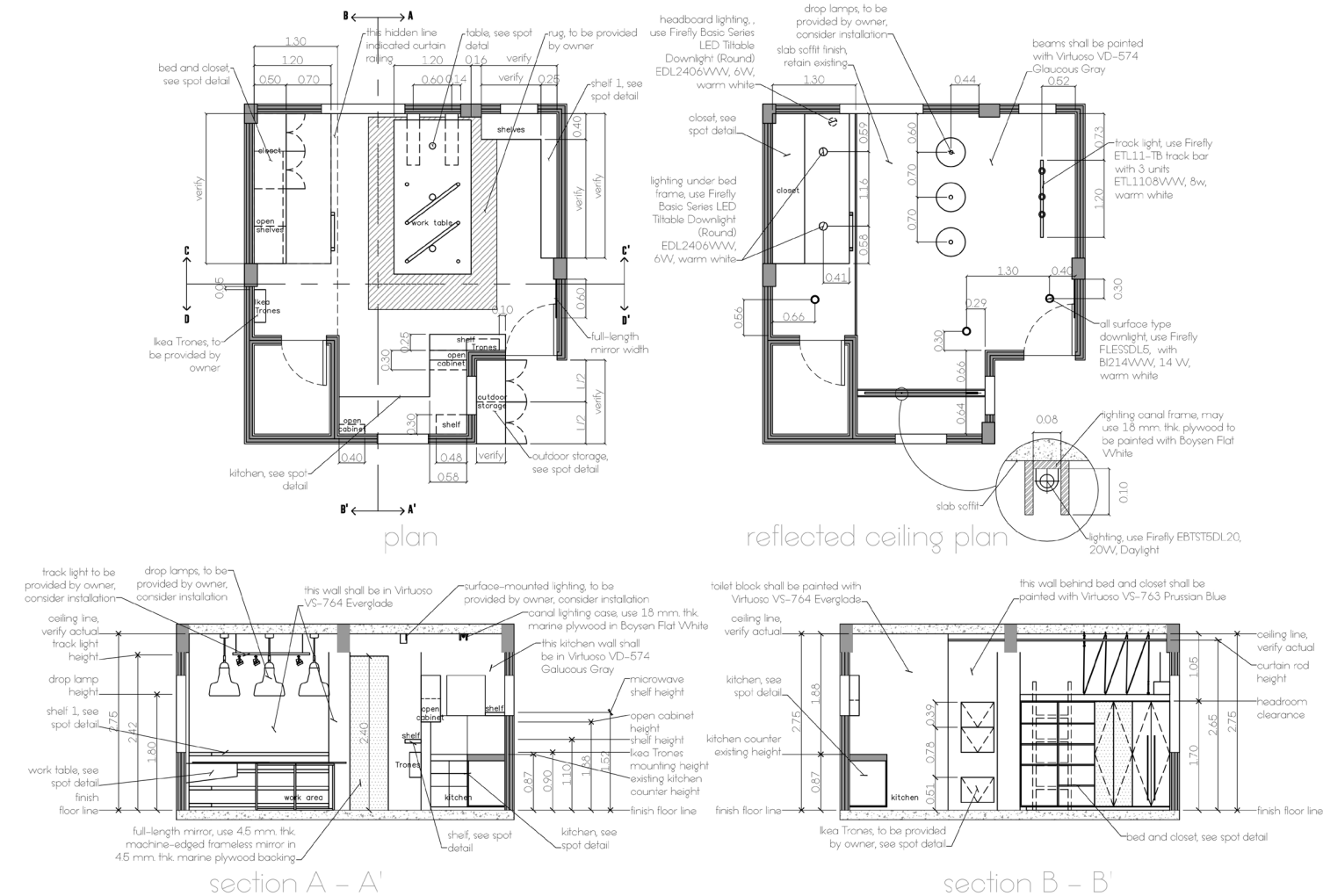
The Boring Studio HQ is a small studio unit of roughly about 22 sq. m. of total floor area. The group needed an office that also serves as living quarters for all its creative endeavors and the HQ must emulate the creative direction and the group's vision. The HQ's location is in a depressed part of Quezon City where traditional neighborhood organically thrives and exists. The group believes that one way to authentic and creative outputs and products can be achieved by exposing one in the realities of the society through developing conscious and self-aware individuals.



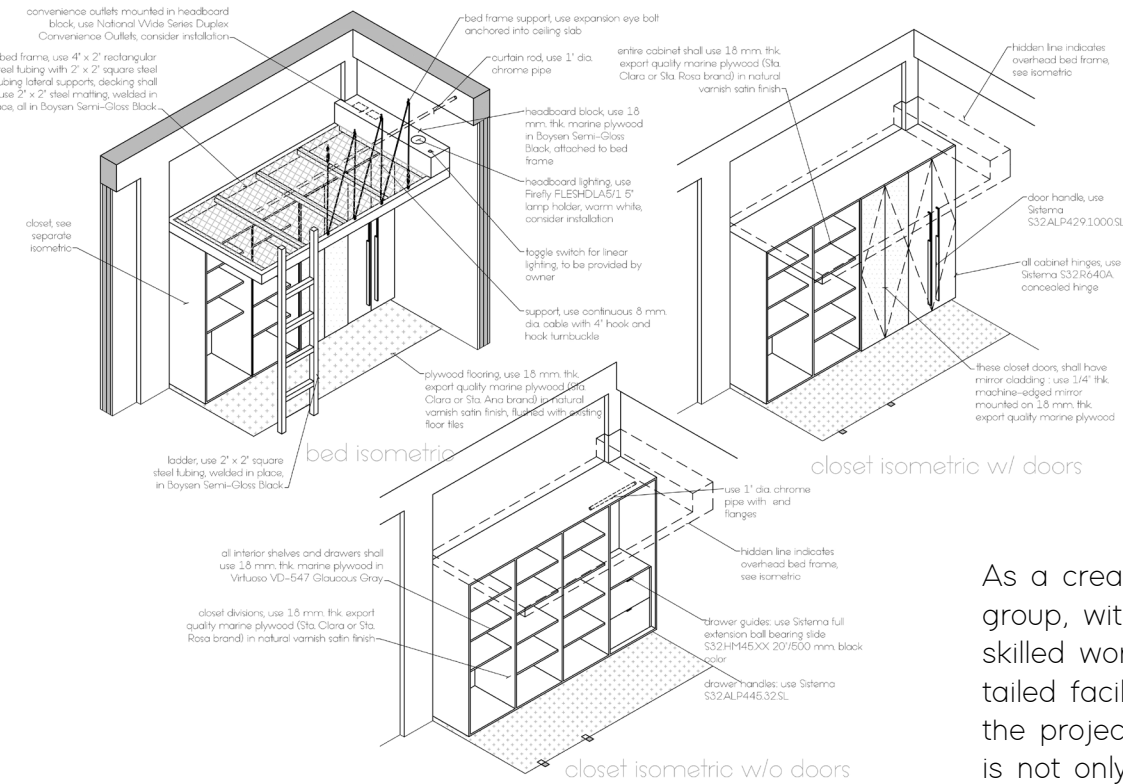
# THE BORING STUDIO HEADQUARTERS

NOVALICHES, QUEZON CITY

The Boring Studio is a group of 4 partner-architects exploring on Architecture, Architectural Interiors, Design, Arts, Publication, Research and Pedagogy.

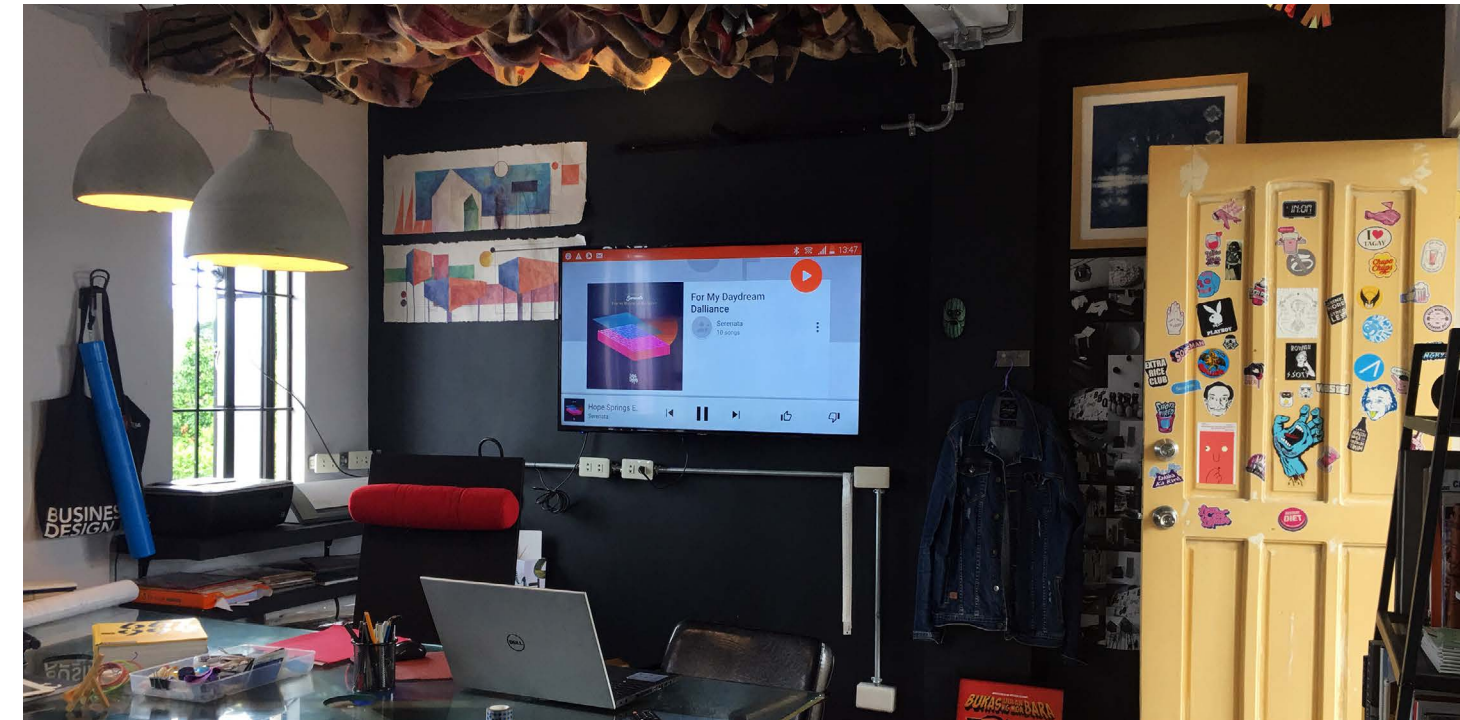


NOTE : detail drawings are not to scale

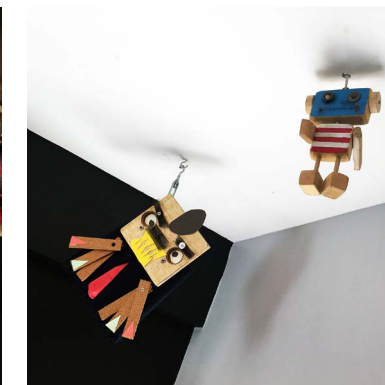
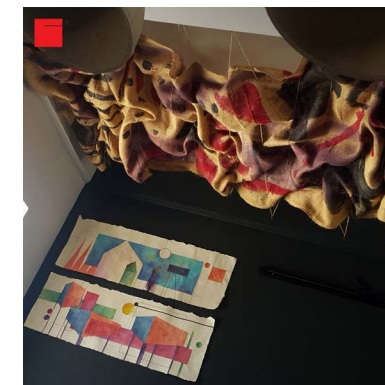


As a creative outlet, the group, with the help of just 1 skilled worker, designed, detailed facilitated and finished the project on their own. This is not only economical as most of the furniture pieces from the co-working table, hanging bed, kitchen counters and closets, were just self-fabricated but also educational as it was a hands-on and immersive way of learning the craft.

NOTE : detail drawings are not to scale



Art pieces were integrated in the interiors reflective of the ideas and experimentation of the group.



Graduated Secondary Education at **ERDA TECHNICAL AND VOCATIONAL SECONDARY SCHOOL**, Pandacan, Manila 2008

Draftsman at **POWER DIMENSIONS INC.**, Project 4, Quezon City 2008

Draftsman at **WSP ASIA PH. INC.**, San Miguel, Pasig City 2008

**ADAMSON UNIVERSITY COLLEGE OF ARCHITECTURE**, Ermita, Manila 2008 - 2014

Architectural Assistant at **POINT ARCHITECTS**, Signal Village, Taguig City 2010 - 2012

Graduated BS Architecture **FAR EAST AIR TRANSPORT INCORPORATED UNIVERSITY (FEATI UNIVERSITY)**, Sta. Cruz, Manila 2016

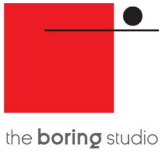
Architectural Designer at **CRUXEN BUILDERS CORP.**, H.V. Dela Costa, Makati City  
2016 - 2018

Partner-Architect and Designer for **THE BORING STUDIO** 2018 - present



JONAS BALES RIVERA, ARCHITECT





the **boring** studio



produced by **The Boring Studio** for Jonas Rivera, Architect-Partner

for our latest works, collaborations and portfolio visit  
[www.theboringstudioarchitecture.com](http://www.theboringstudioarchitecture.com)