



portfolio

VOL 0.1

by Cocoi Base for **The Boring Studio Architecture**

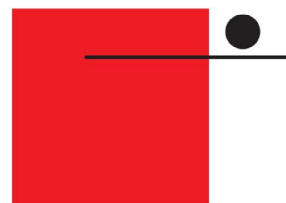
August 2017



ALL RIGHTS RESERVED. No parts of this book shall be reproduced or transmitted in any form or by any means, electronic or mechanical, including photocopying, recording or by any information storage and retrieval system, without the written approval of the Author, except where permitted by law.

CONTENTS

| | |
|-----|-----------------------------------|
| 05 | Part 1 : 6 Concept Houses |
| 06 | Lantern House 01 |
| 16 | Bachelor House 02 |
| 26 | Arthaus 03 |
| 36 | House Playful 04 |
| 46 | Elevated House 05 |
| 58 | House by the Hill 06 |
| 74 | Part 2: The Oxymoron Of Patterns |
| 83 | Part 3: Furniture |
| 95 | Part 4: Interior Design Exercises |
| 104 | About the Author |

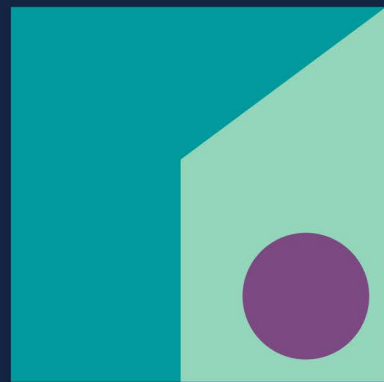


the **boring** studio

VOL 0.10

A Creative must be aware of where his foot is and must never lose his compass. He toils not only to progress himself but to contribute to the advancement of his craft as well.

This portfolio is an attempt to showcase ideas, document progress and set a benchmark in a Creative's journey through design.



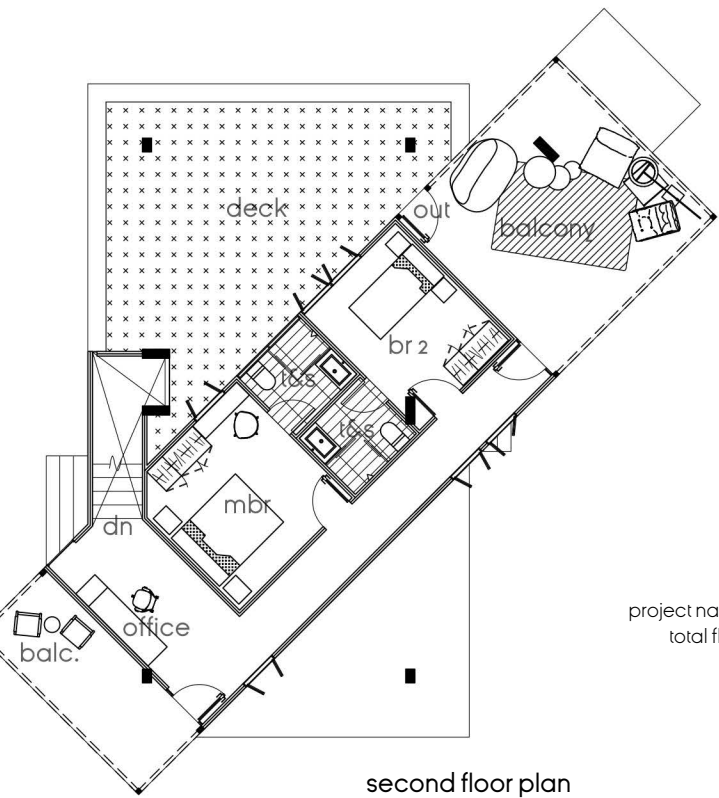
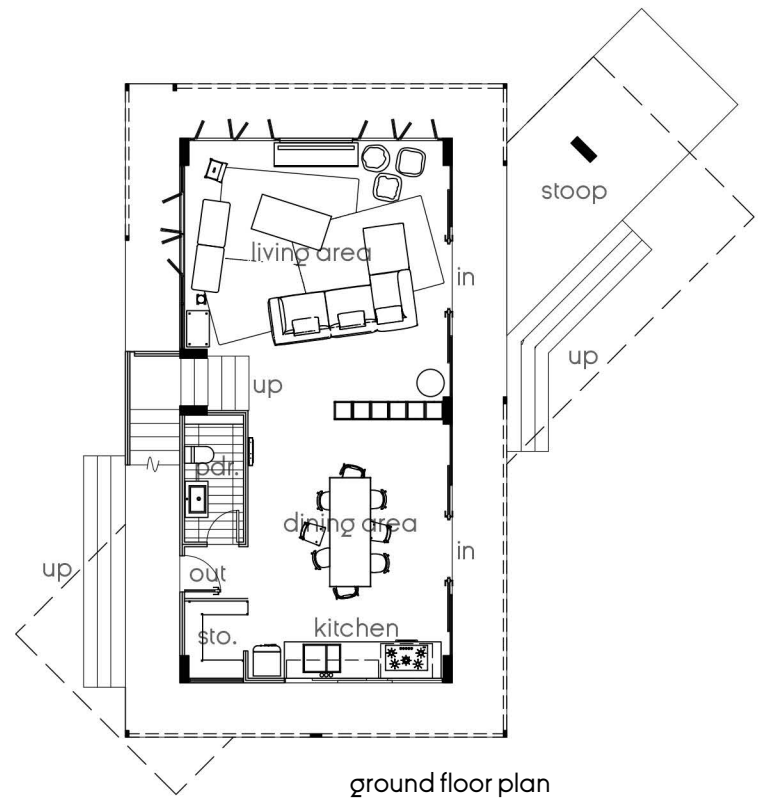
part 1 : 6 Concept Houses

a design exploration on 6 concept houses modelled for different clients with different requirements



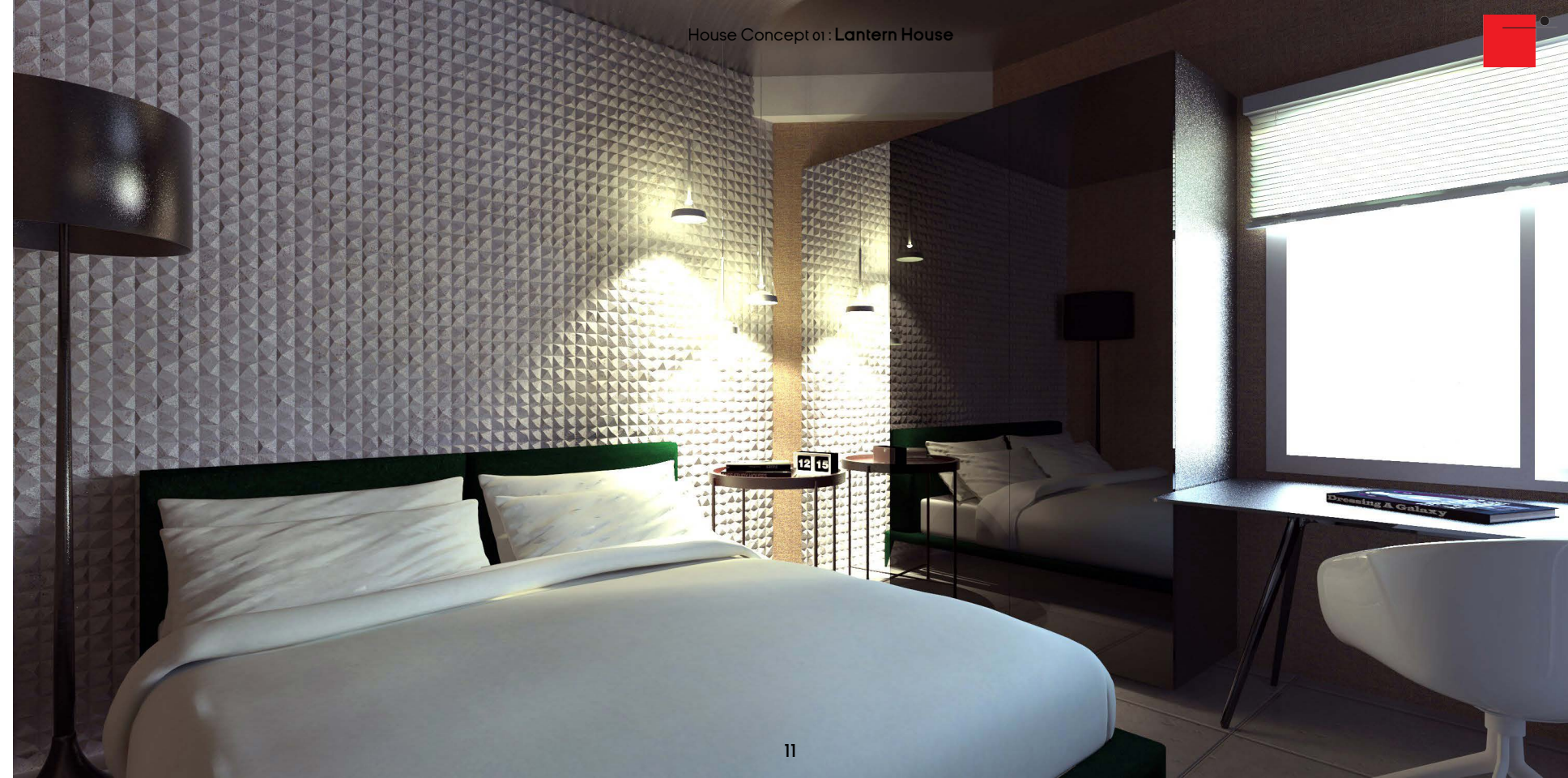
House Concept 01
“Lantern House”





project name : Lantern House
total floor area: 256 sq. m.

images are not to scale



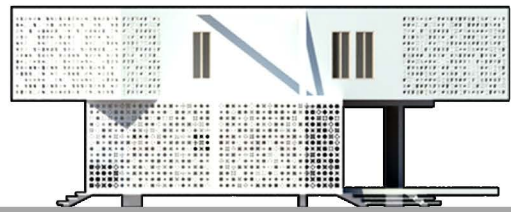
images are not to scale



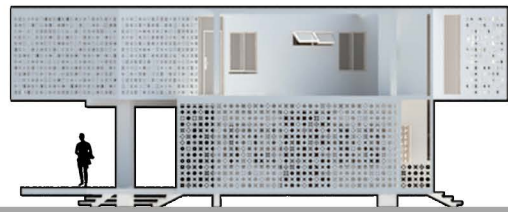
front elevation



rear elevation



right elevation



left elevation



House 01 is a new-old house which aesthetic is borrowed from Mid-Century Modern classics. The ground floor is in open plan, surrounded by a pathwalk, enclosed with a screen made of stacked decorative blocks molded in different patterns.

When lights open at night, the whole structure glows like a lantern with light seeping through the decorative screen.



House Concept 02

a compacted “Bachelor House”





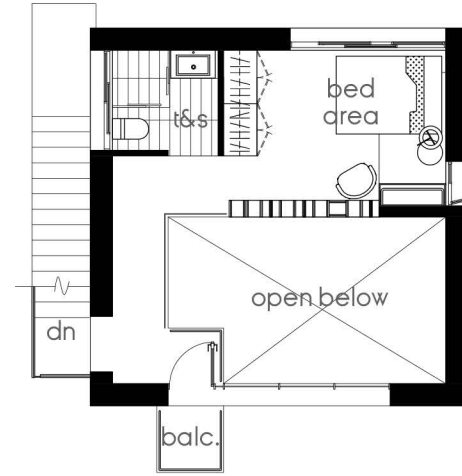
House 02 is a project for a bachelor who has a palpable good taste. The architecture is compacted, rigid and provides everything that an independent living needs. The interior is a collage of designed objects with similar appeal, brought together by a common element - *taste*.



images are not to scale



ground floor plan



second floor plan



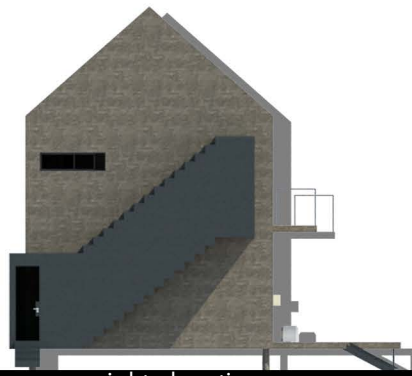
images are not to scale



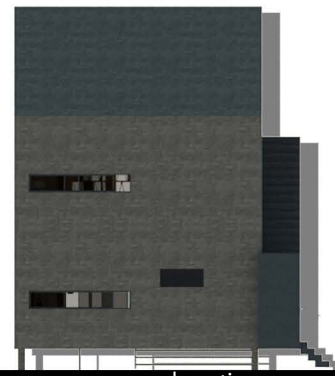
front elevation



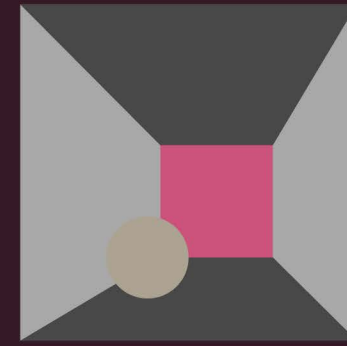
left elevation



right elevation



rear elevation





House Concept 03

“Arthaus”

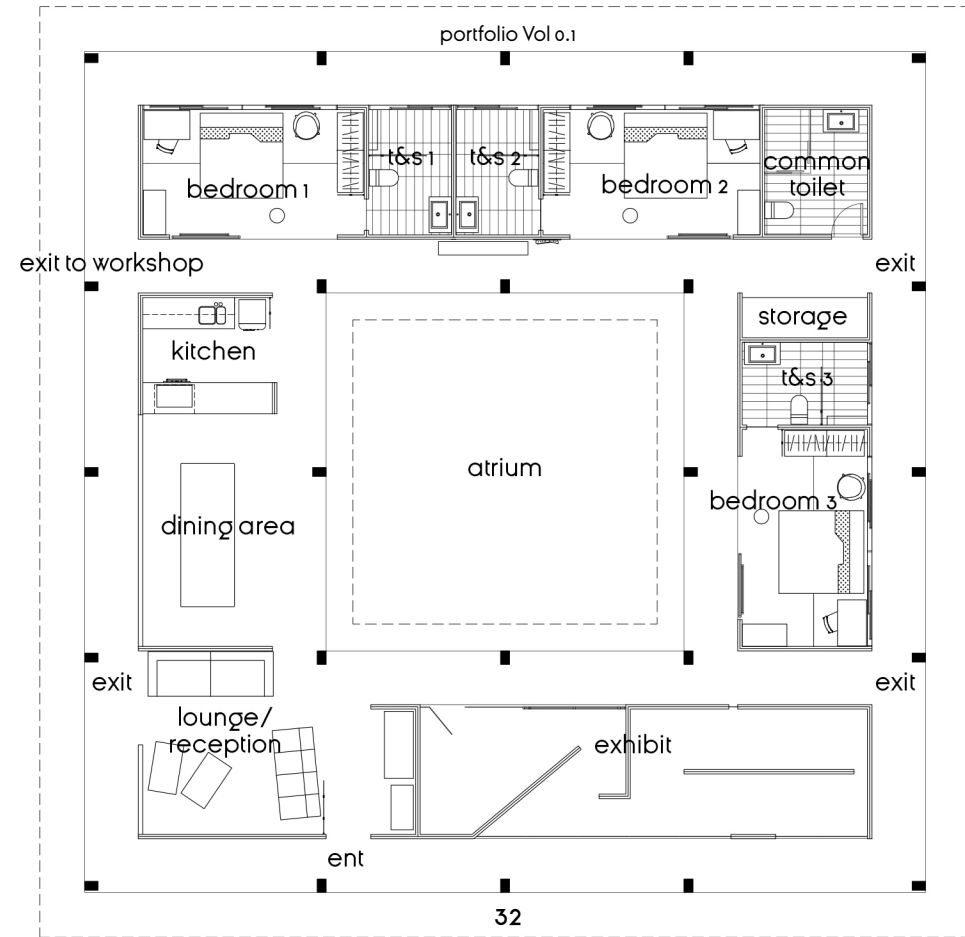


House 03 is modelled for a group of young, prolific artists. The house includes 3 individual rooms, a gallery, an atrium that may also serve as an exhibition space, a common dining room & kitchen and a lounge that serves both as living area and a guest reception. At the back of the house is another structure that serves as the workshop.



project name : Arthaus
total floor area: 290 sq. m.

images are not to scale



floor plan

House Concept 03 : Arthaus

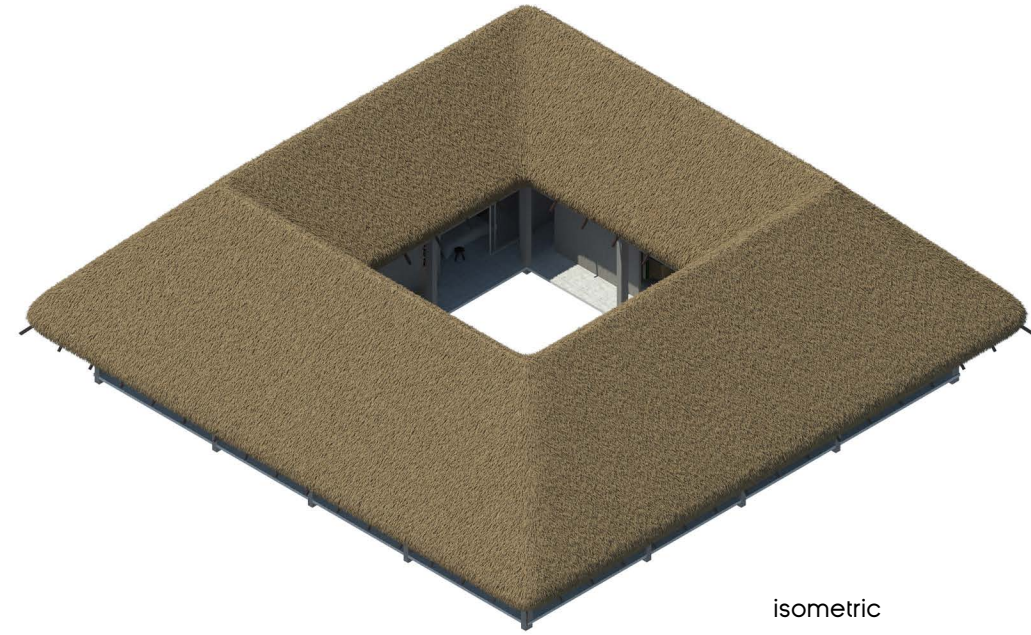




images are not to scale



front elevation



isometric

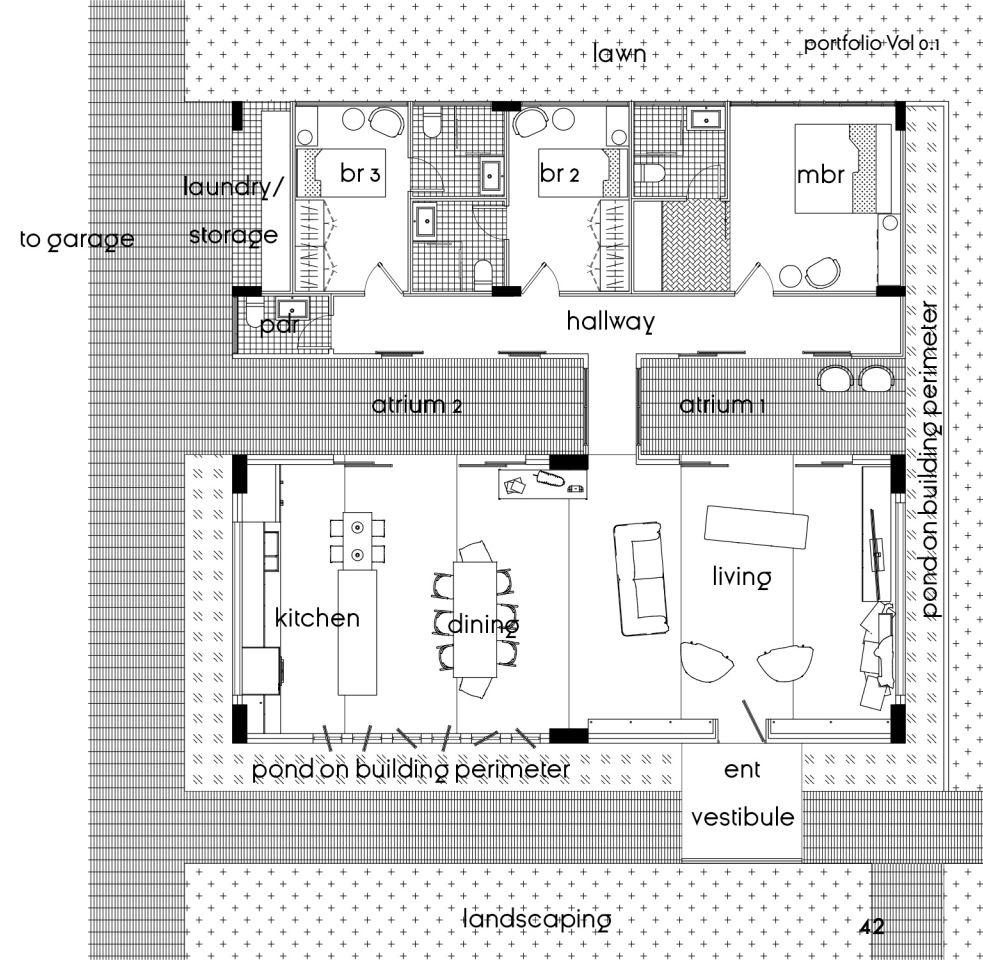
House Concept 04
“House Playful”





House 04 is a house filled with whimsical elements integrated in its design. The whole house in white paint and plain walls serves as a canvas for anything that is put in it, making it an installation of its own.





project name : House Playful
total floor area: 160 sq. m.

images are not to scale

floor plan

House Concept 04 : House Playful





front elevation

images are not to scale



sections



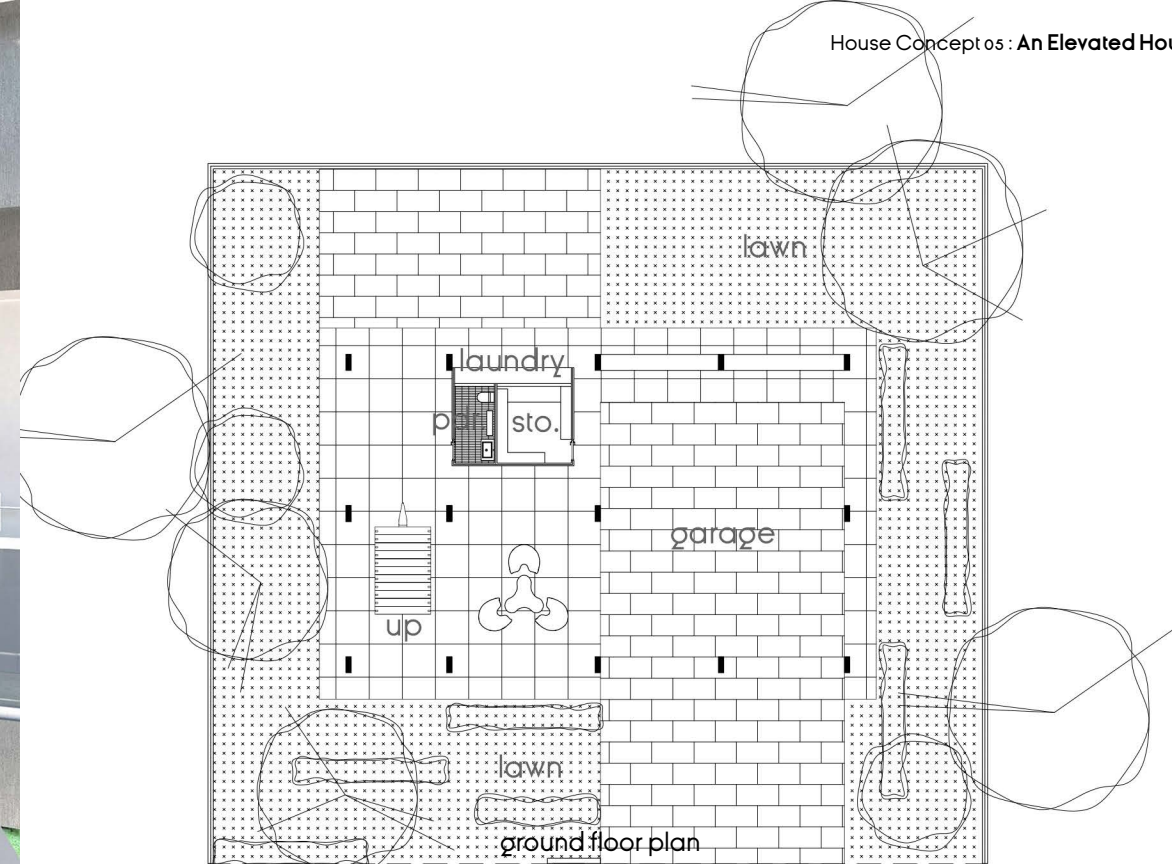


House Concept 05
"an Elevated House"





images are not to scale



ground floor plan



second floor plan



Built for a flood-prone area, **House 05** is elevated on stilts with everything located at the second floor. At the second floor facade facing southwest are full-length movable brise soleils to control sunlight coming in as desired. A garden is located at the roof deck.

The house is Brutalist in nature showing most of the material finishes in its barest form.







images are not to scale



front elevation



right elevation



left elevation



House Concept 06

“House by the Hill”



The **House by the Hill** is a perfect place for a family getaway. Situated in the middle of greens, the house sits on a sloping area of a mountainside.

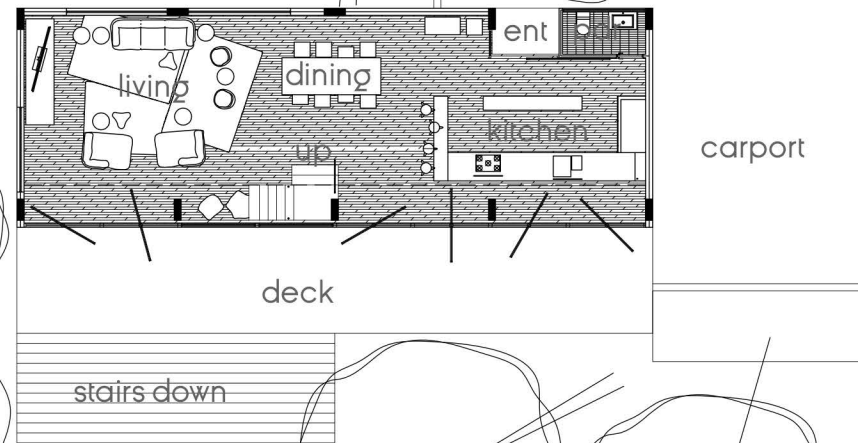
The whole facade is made of wide-panel glass window-door-walls that can be turned open to let nature inside the house.



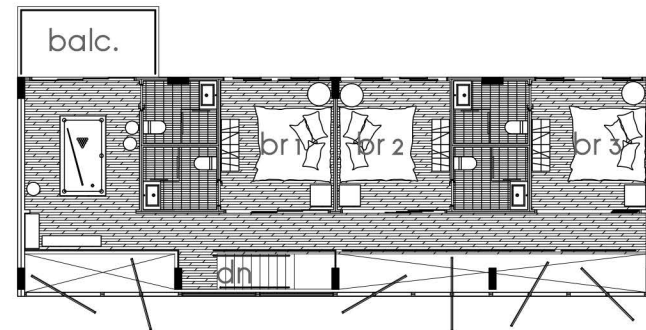


project name : House by the Hill
total floor area: 222 sq. m.

images are not to scale



ground floor plan

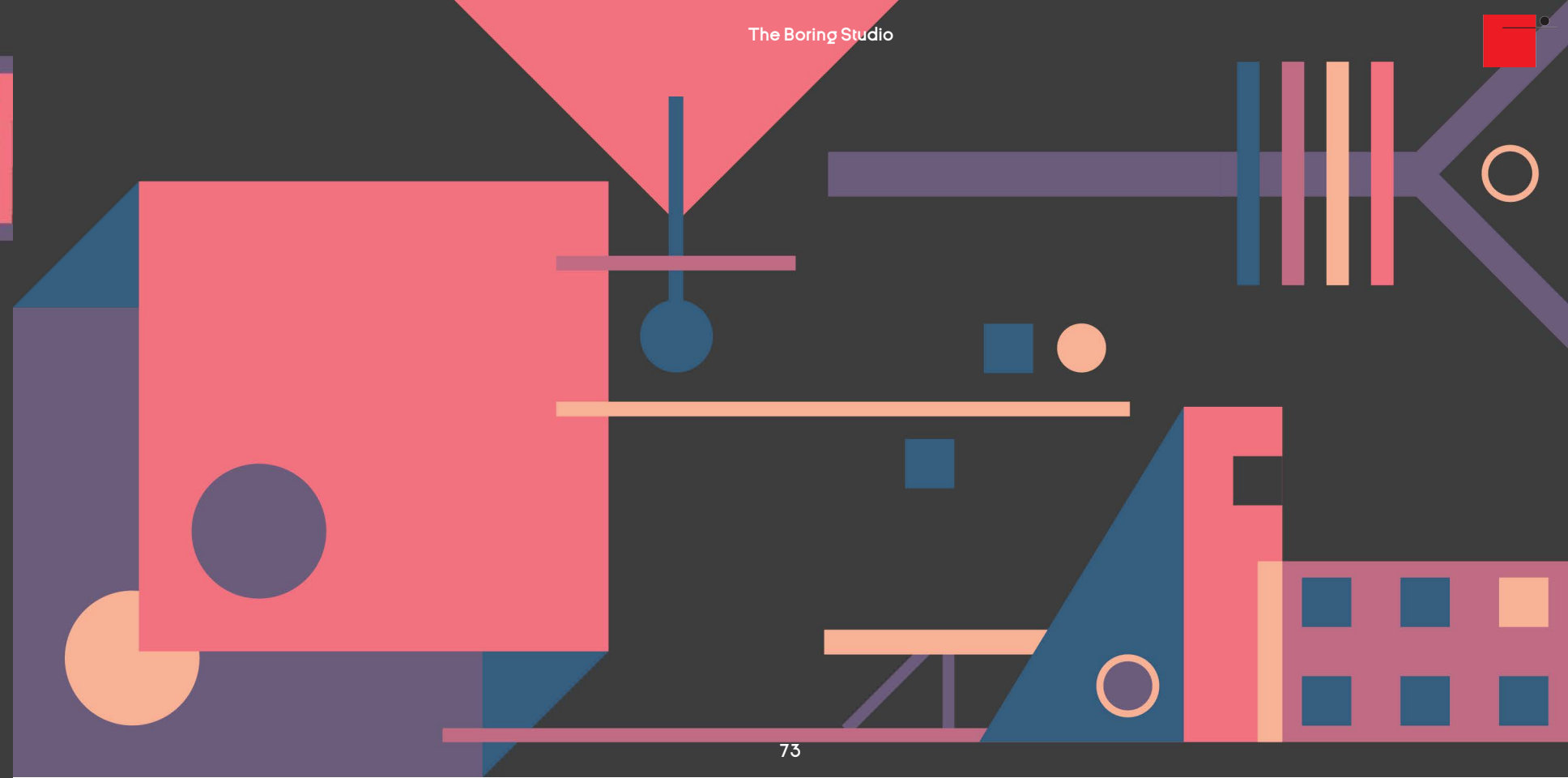
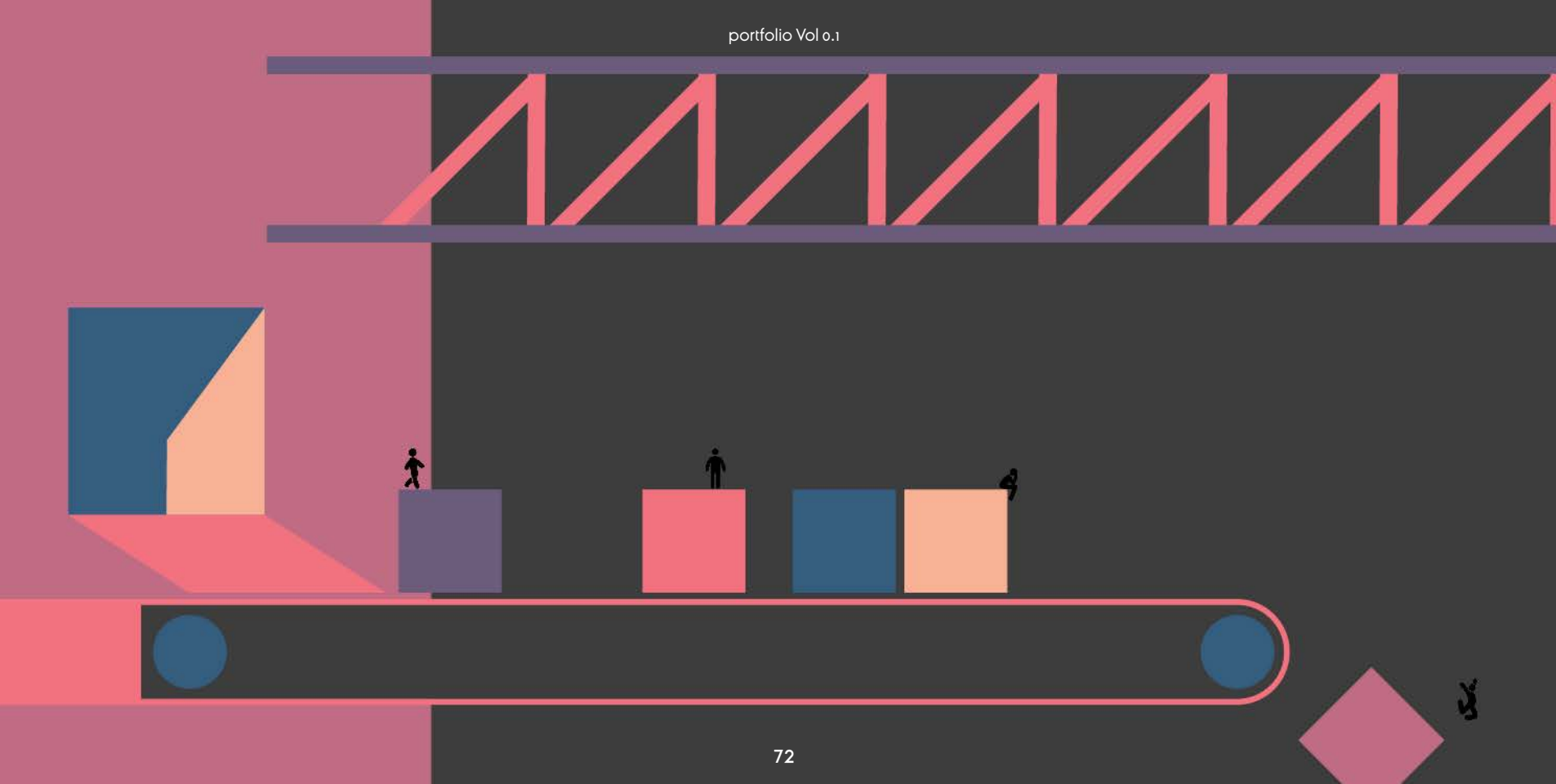


second floor plan









part 2 : **The Oxymoron of
Patterns**

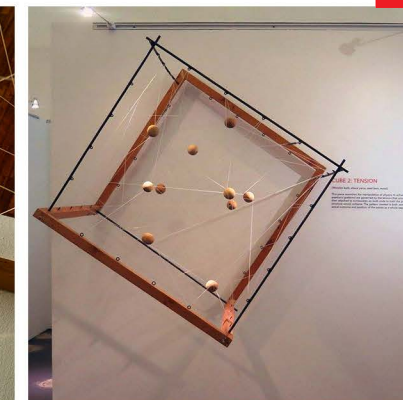
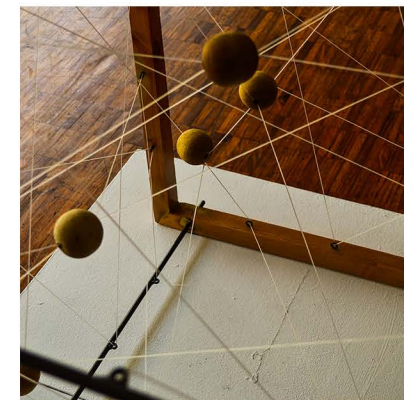
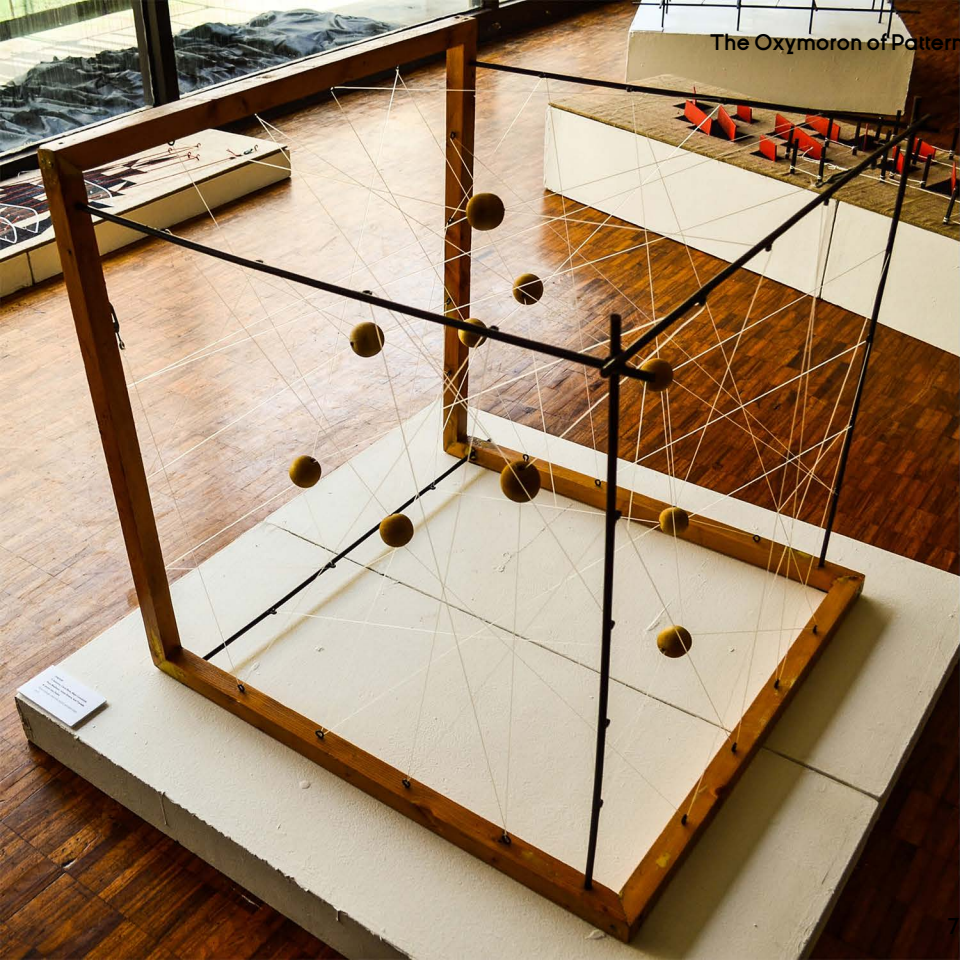
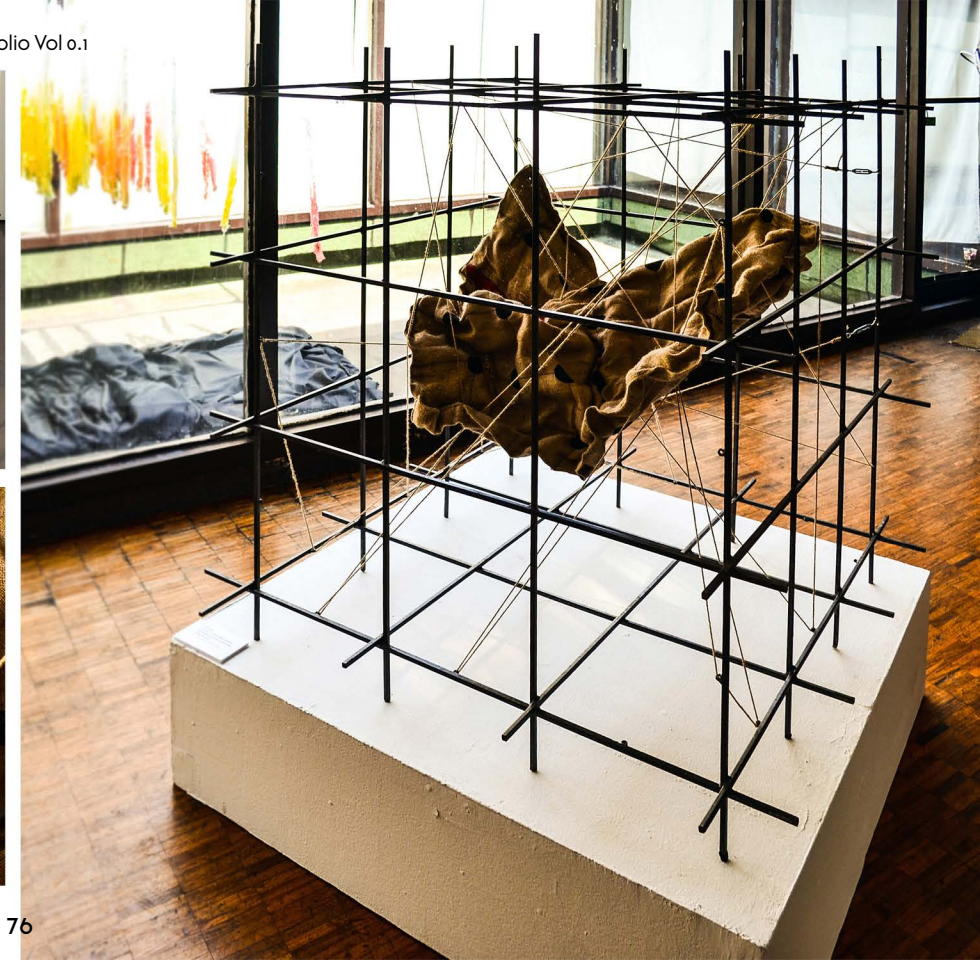
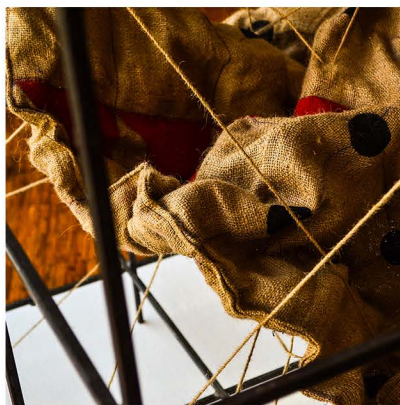
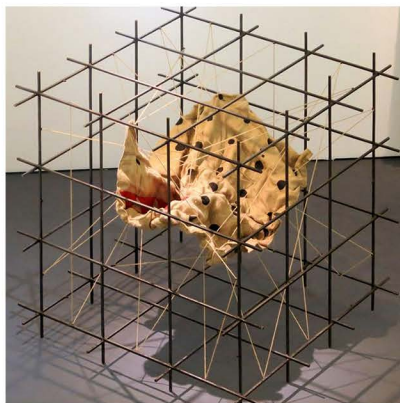
architectural sculptures



Cube 1 : Distortion - Juxtaposition

2015

A fabric painted with a pattern is distorted arbitrarily, suspended by strings in different directions. In the outcome, although the painted pattern in itself is still discernible albeit the plane in which it exists is already distorted, it is perceived only to be as a component of a whole which is composed of different structure of patterns. This Piece is product of careful juxtaposition of different structures to compose a unified whole.



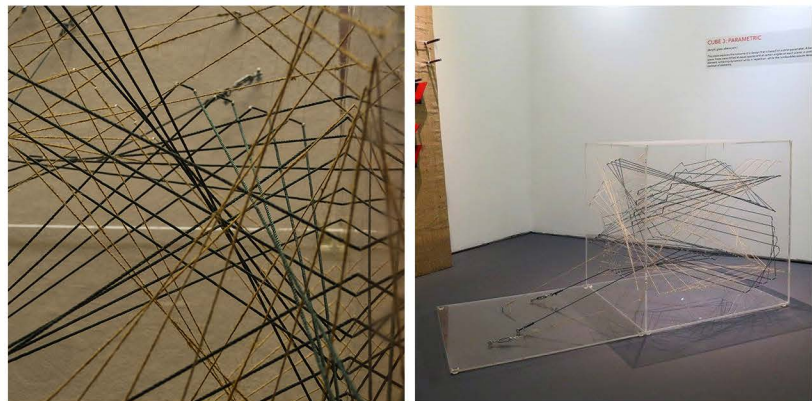
Cube 2 : Tension

2015

This piece examines the manipulation of physics to achieve a certain pattern. A continuous nylon string is inserted through balls of which positions are governed by tension resulting from pulling of the strings from multiple directions. The continuous string is then attached to turnbuckles on both ends to hold the pieces together. If a turnbuckle is unhooked, the whole structure would collapse. The Pattern created is both controlled and arbitrary as the balls are positioned to where they must be while the actual outcome and structure of the pieces as a whole depends on the tension generated and the resilience of the materials.

Cube 2 : Parametric 2015

This piece explores the outcome of a design that is based on a strict parameter. A bounding element commands the mass and volume of the piece; holes were drilled at equal spaces between each other at certain angles on each plane; a continuous string pierces through the holes of the bounding element, achieving dynamism while in repetition; while turnbuckles assure tension and strength. Choice of materials were based on contrasting elements.



Triptych Volume 01

2015

The Triptych examines oxymoron of patterns in 2D-3D and objects-to-illustrations contrast. Each panel is 2' x 6'.

OXYMORON of patterns

"take for example i have with me a chalk straight out from a box | of course you know what it is [for] | i took the rest of the chalks from out of the box and what do i have ||| chalks right[?]"

"wait, i have an idea | i get a lot of more chalks and maybe, a little more | i stick these together systematically [arbitrarily?] on 'whatever' and what do i get? | still a chalk? | group of chalks? | a pa --- "

a pattern emerges | but it was never defined [yet] || nothing [something] that i have seen before[?]

"pieces x pieces, easily it is..."

now curiosity | then inquiry [dialogue] | i do [not] know what it is for. || perception [judgement] of objects [pattern] is both influenced by a-priori and a-posteriori concepts ||

what happens then when the a-priori is challenged and the a-posteriori struggles to find [define] an answer? ||| when a familiar object [pattern] is juxtaposed with another [same] object in any manner with repetition, contrast, opposition, syntax, tension & compression ETC., thus, resulting to another pattern [object], the a-priori concept of THE object [pattern] is being scrutinized ||

OXYMORONIC??

is an empirical judgement [a-posteriori] always [UN]reliable [UN]justifiable --- when the OBJECTS become a SUBJECT, to which judgement [perception] would one eventually lean to? ----

pieces <> whole | tension <> compression | chaos <> order | ambiguity <> definition

'there will be no other choice but to [digest] when one is stuck between antipodals.'

"the sum of the pieces, perhaps it is a - -"



The Oxymoron of Patterns is the culminating project-activity of selected students of The Brown Bauhaus METAARCH ADVANCED FOUNDATION COURSE IN DESIGN POETICS + MODERN AESTHETICS. This series of exhibitions also included 3 grade schoolers who were part of The Brown Bauhaus' ARKLAB (Architecture Kindergarten Laboratory) course.

The architectural art installation is an attempt to frame the perplexity of patterns through a series of diagrams and meta-annotations. Pattern is defined here as a cybernetic system composed of moments of phenomena in nature and in secular world that occur simultaneously in the process of creation, destruction, and in-between. These patterns are the building blocks of which life were built upon. These relationships that were built upon the fabric of life are dialogues or rather diagrams that communicate the essence of living. These enigmatic phenomena of life are brought to light by its building blocks of Patterns. Patterns are symbiotic relationships of nature that exist in time and space that is everywhere at once. It is omnipresent, temporary and fleeting at the same time. The truth of a pattern lies in the oxymoron.

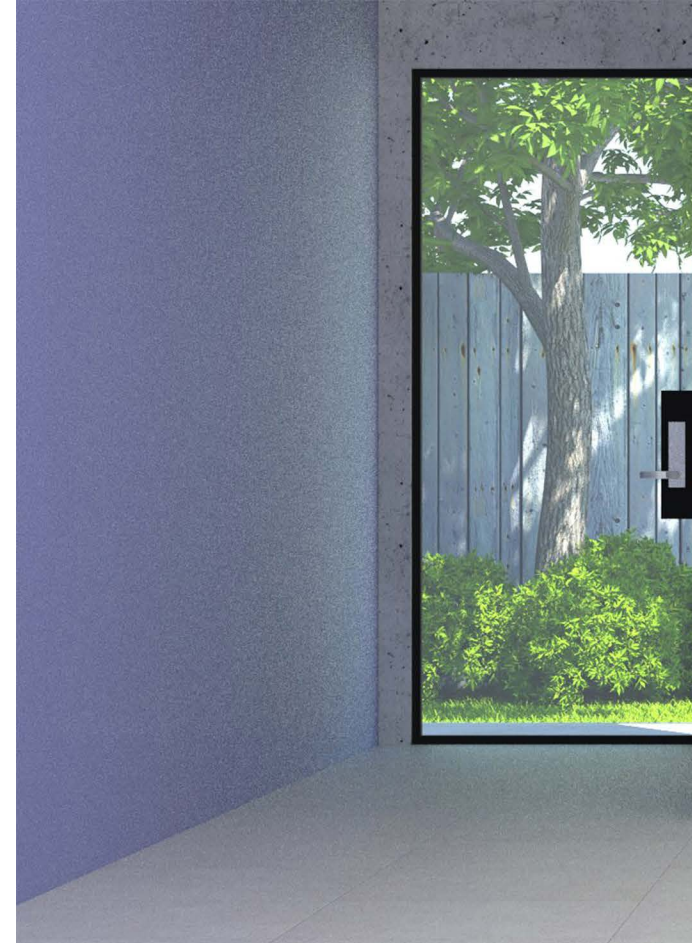
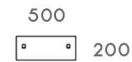
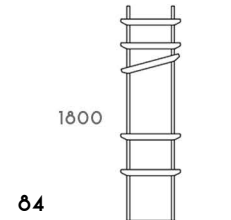
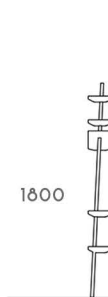
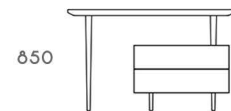
The installation works used natural and found objects such as peanut shells, staple wires, flexible tubes, nails, twigs, etc. and were abstracted through their metaphysical.



part 3 : Furniture

stool console table shelf

april 2017





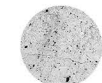
raw dining set 1

april 2017

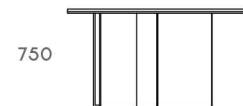
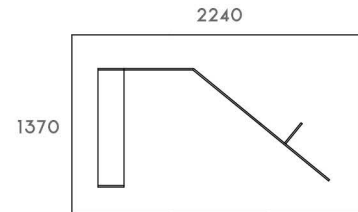
table



RECLAIMED METAL



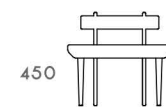
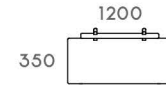
CONCRETE



lounge chair



WALNUT



bench



WALNUT



stool



WALNUT

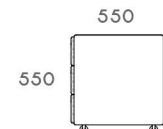
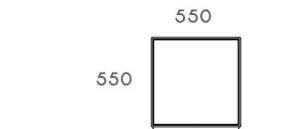


ASH



OAK

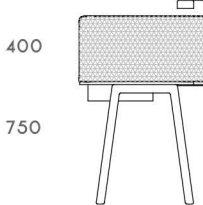
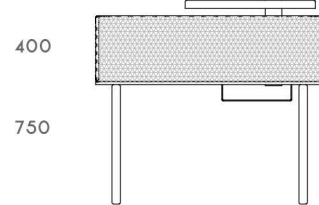
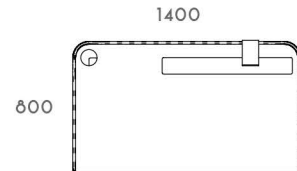
OTHER FINISHES



detachable
tray top

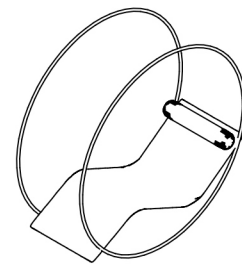
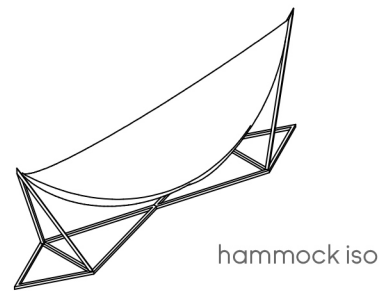
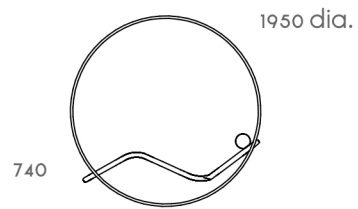
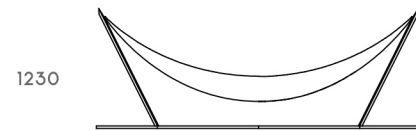
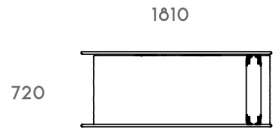
upholstered
drawer

light
detachable
upholstered
partition

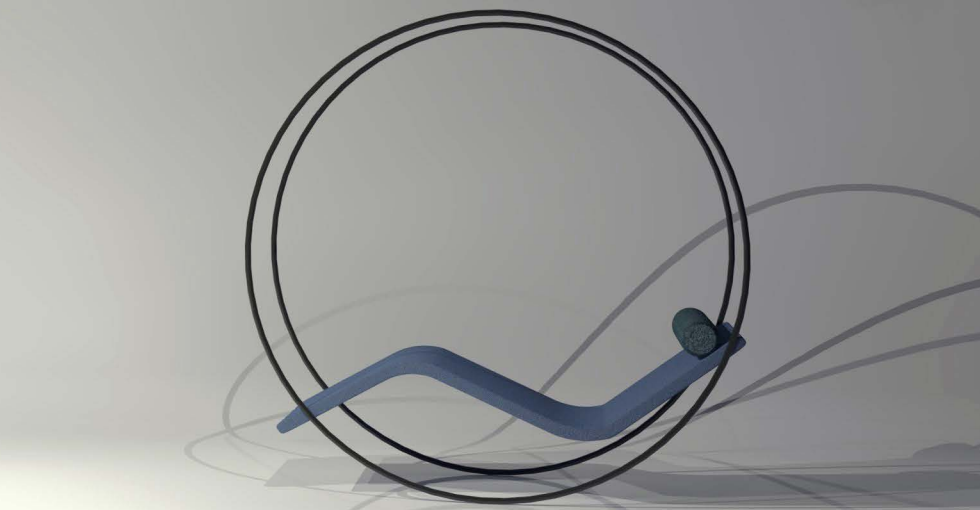
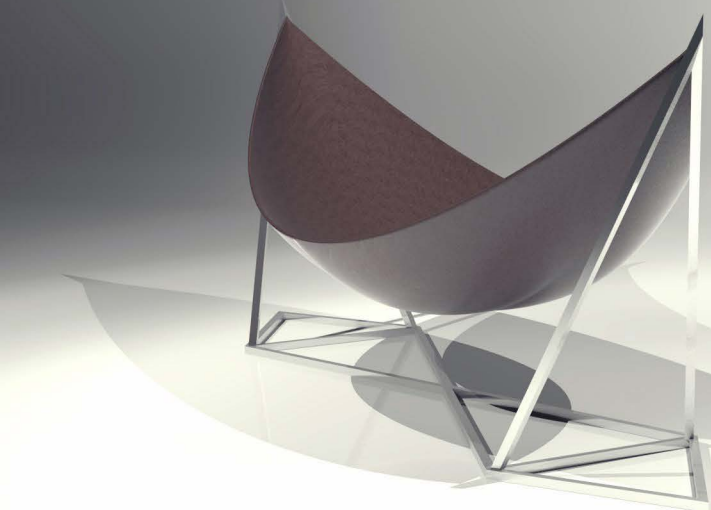


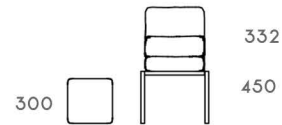
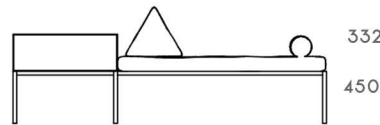
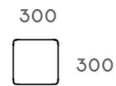
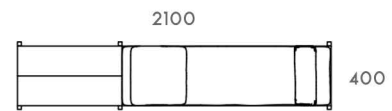
office desk and movable drawers

august 2017



hammock and rocking chaise





abecedarian
april 2017





conceptual design exercises on architectural interiors

part 4 : interior design exercise



**30 sq. m.
condominium unit**

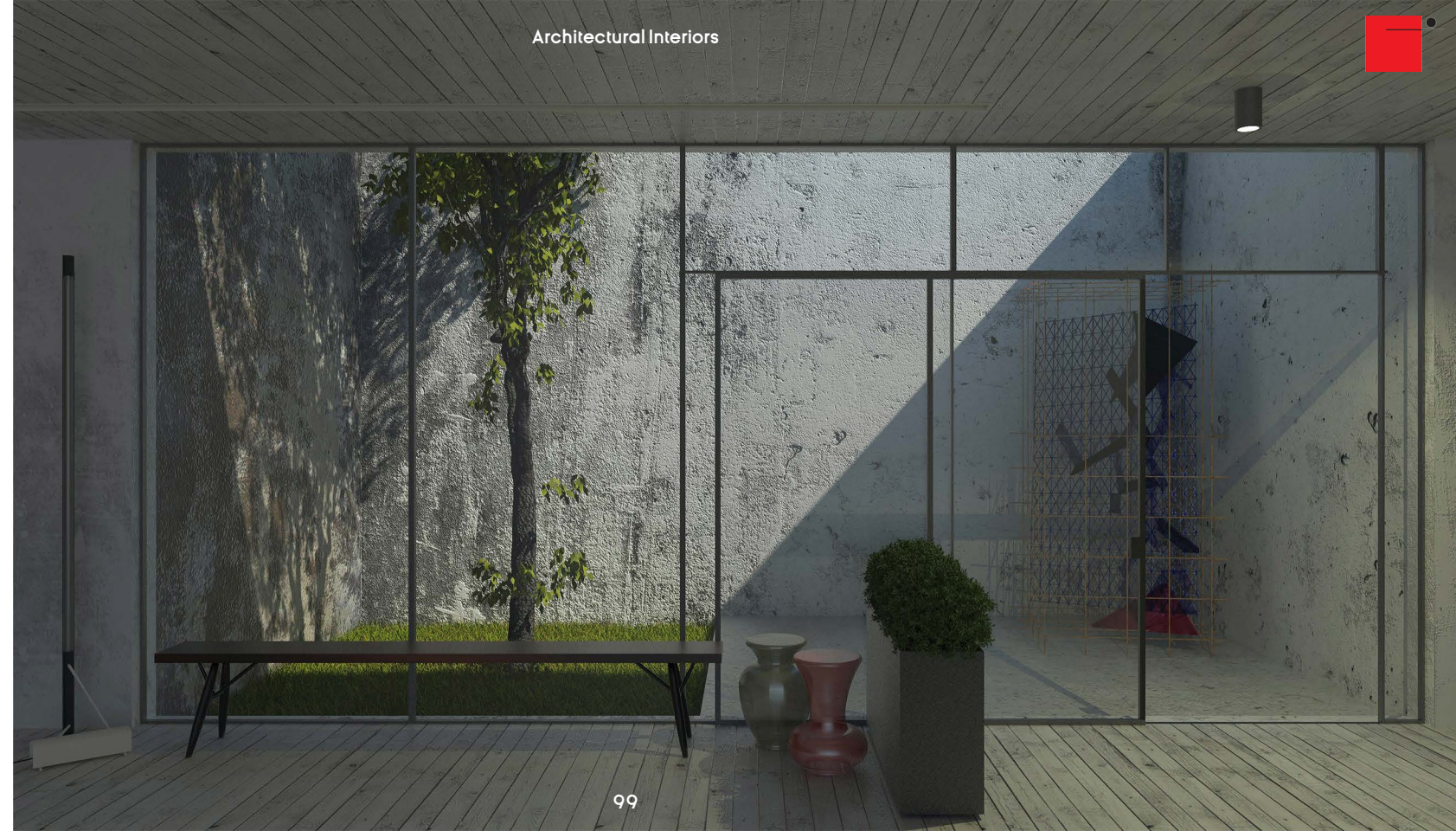
The Beacon Chino Roces
2015

a creative space for a young professional

architectural interiors exploration on Japanese philosophy "Wabi-sabi"

raw interiors

2016



pulp fiction

2015

a pop art installation



indoor-outdoor lounge for a farmhouse

ranch

2015





Victor Cocoi Base Jr.

Graduated at **Adamson University College of Architecture** : 2014

Junior Architectural Designer for **Edwin D Uy Architecture, Interiors & Design office** : 2014 - 2018

Principal Architect, Founder and Artist for **The Boring Studio** : 2018 - present

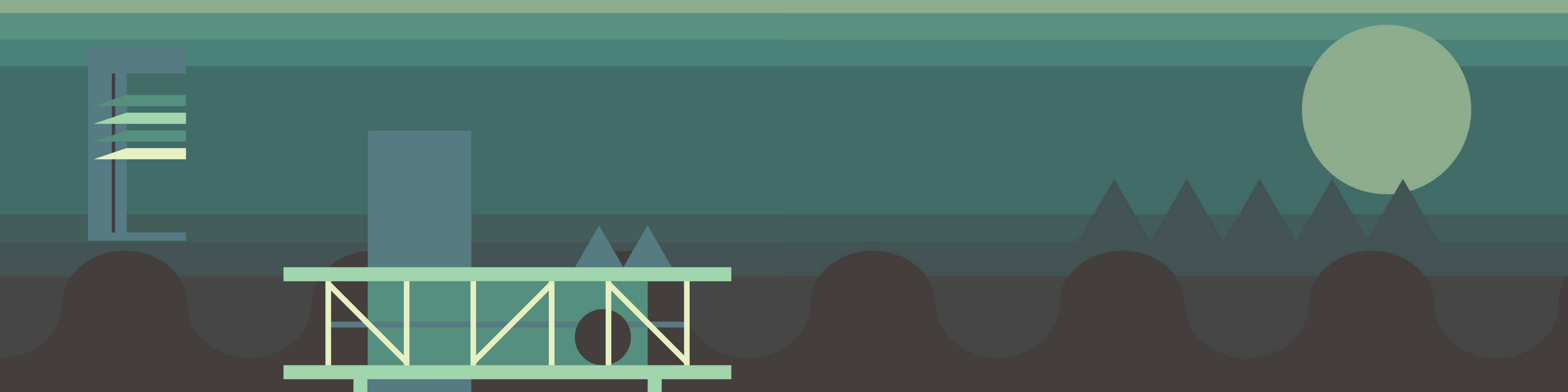
sketch 07, 2015
watercolor and pen & ink on paper



the **boring** studio

The Boring Studio is currently headed by 4 partner-architects exploring on Architecture, Architectural Interiors, Design, Arts, Publication, Research and Pedagogy.

cocoi.base@gmail.com
cocoi_base@yahoo.com





this portfolio was made for **The Boring Studio**

visit www.theboringstudioarchitecture.com for our latest works, collaborations and projects